



FORD F-250 | F-350 | F-450
2022 SUPER DUTY®

SUPER SAYS IT ALL.



BUILT *Ford* PROUD

It defines the legendary work ethic, capability and toughness of Ford Super Duty® pickups. From F-250 to F-450, XL to LIMITED, our impressive array of powertrains, equipment and features lets you build a perfect truck for your line of work. You have our name on it. This year, **newly available SYNC® 4 features a larger 12" touchscreen** and is the smartest version of SYNC ever. An available new **XLT Black Appearance Package** adds more choice at the beginning of the lineup. Plus, the available **TREMOR™ Off-Road Package** upfits Super Duty for adventures far beyond the job site. Our dedication to Built Ford Tough® fundamentals has produced this: our most capable heavy-duty pickup. And this: F-Series® America's best-selling trucks!

BEST-IN-CLASS²

7,850 LBS.

MAX. AVAILABLE PAYLOAD³

BEST-IN-CLASS

45,300 LBS.

MAX. AVAILABLE GCWR⁴

BEST-IN-CLASS

475

MAX. AVAILABLE HORSEPOWER⁵

37,000 LBS.

MAX. AVAILABLE TOWING⁶

BEST MAX. AVAILABLE
CONVENTIONAL TOWING⁷

24,200 LBS.

IN THE CLASS

1,050 LB.-FT.

MAX. AVAILABLE TORQUE⁵

F-450 LIMITED CREW CAB 4x4. Star White Metallic Tri-coat® 5th-Wheel/Gooseneck Trailer Tow Prep Package. Available equipment. (Max. Payload 4,847 lbs., Max. Conventional Towing 24,200 lbs., Max. Gooseneck Towing 30,800 lbs., and Max. GCWR 43,500 lbs.)

1. Best-selling trucks for 44 years based on 1977-2020 CY total sales. **2.** Class is Full-Size Pickups over 8,500 lbs. GVWR. **3.** Max. payload of 7,850 lbs. available on F-350 DRW Regular Cab Long Box 4x2 with 6.2L engine and available F-350 Gas Heavy-Duty Payload Package (not shown). Max. payload varies and is based on accessories and vehicle configuration. See label on door jamb for carrying capacity of a specific vehicle. **4.** Max. GCWR of 45,300 lbs. on F-450 Regular Cab (not shown). **5.** Max. horsepower and torque based on 6.7L Power Stroke® V8 Turbo Diesel. **6.** Max. gooseneck tow rating of 37,000 lbs. available on F-450 Regular Cab 4x2 with diesel engine (not shown). Max. towing varies based on cargo, vehicle configuration, accessories and number of passengers. **7.** Max. conventional tow rating of 24,200 lbs. available on F-450 Crew Cab with diesel engine. Max. towing varies based on cargo, vehicle configuration, accessories and number of passengers. **8.** Additional charge.

Horsepower, torque, payload and towing are independent attributes and may not be achieved simultaneously. Vehicle imagery throughout this brochure may be computer-generated and may include available and aftermarket equipment.

Important information regarding availability. You may have heard the auto industry is experiencing a combination of high demand and global supply-chain constraints. This means our ability to build new vehicles with some features may not be available. We're doing everything we can to innovate our way through this and meet the demand for new Ford vehicles. We will continue to provide updates as we have them or you can contact your Ford Dealer for additional assistance.

LEADERSHIP WHERE IT COUNTS.

| BEST-IN-CLASS | CLASS EXCLUSIVES | TREMOR™ SUPERIORITY |
|---|---|---|
| Best Available Diesel HP – 475 | Available Pro Trailer Backup Assist™ with Trailer Reverse Guidance | Best Water-Fording Depth in the Class – 33" |
| Best Available Gas Torque¹ – 475 lb.-ft. | Available BoxLink™ with 4 Premium Locking Cleats | Class-Exclusive Limited-Slip Front Differential |
| Best Available Gas HP¹ – 430 | Available Stowable Loading Ramps | Class-Exclusive Trail Control™ |
| Best Max. Available Conventional Towing Capacity² – 24,200 lbs. | Available Multicontour Front Seats with Active Motion® | Class-Exclusive Rock Crawl Drive Mode |
| Best Max. Available Payload Capacity³ – 7,850 lbs. | Available Rear Under-Seat Storage that Folds into the Flat Load Floor | Class-Exclusive Extended Axle Vent Tubes |
| Best Max. Available Gross Combination Weight Rating (GCWR)⁴ – 45,300 lbs. | | Largest Diameter Tires in the Class – 35" |

F-250 LARIAT™ CREW CAB 4x4. Carbonized Gray Metallic. Available Black Appearance and TREMOR Off-Road Packages. Available equipment. (Max. Payload 2,883 lbs., Max. Gooseneck Towing 16,800 lbs., Max. Conventional Towing 15,000 lbs., and Max. GCWR 24,900 lbs., when properly equipped with 6.75' box and available 7.3L engine.)

1. Max. gas torque and horsepower with the available 7.3L gas engine. **2.** Max. conventional tow rating of 24,200 lbs. available on F-450 Crew Cab with diesel engine (not shown). Max. towing varies based on cargo, vehicle configuration, accessories and number of passengers. **3.** Max. payload of 7,850 lbs. available on F-350 DRW Regular Cab Long Box 4x2 with 6.2L gas engine and available F-350 Gas Heavy-Duty Payload Package (not shown). Max. payload varies and is based on accessories and vehicle configuration. See label on door jamb for carrying capacity of a specific vehicle. **4.** Max. GCWR of 45,300 lbs. on F-450 Regular Cab (not shown).

Horsepower, torque, payload and towing are independent attributes and may not be achieved simultaneously.



YOUR ULTIMATE TOWING MACHINE.

A Super Duty® pickup isn't just built to a number. It's designed, engineered and tested so you can tow up to 37,000 lbs.¹ – over 18 tons – with confidence. Available electronically controlled hydraulic steering and available Adaptive Steering help make it easier to control and drive, especially when towing heavy loads. Standard Trailer Sway Control helps keep truck and trailer in line. The available Ultimate Trailer Tow Camera System² includes 5 cameras (views shown below) to monitor all the action. Plus, once programmed,³ class-exclusive Pro Trailer Backup Assist™ with Trailer Reverse Guidance² makes parking your trailer as simple as turning a knob.

Front split-view

Rear normal + 360



360-DEGREE CAMERA VIEWS

The front, rear and sideview mirror cameras of this system allow you to toggle through the following views: front and rear normal, front and rear split-view, and front and rear normal + 360.



REAR CHMSL CAMERA VIEW

The zoom feature of this view is particularly helpful when connecting a 5th-wheel or gooseneck trailer.



TRAILER REVERSE GUIDANCE VIEW

Automatically switches between side and rear camera views to show you what's most relevant while backing up any trailer – including 5th-wheel and gooseneck – and provides screen graphics to help guide you.

F-350 PLATINUM® CREW CAB 4x4. Antimatter Blue Metallic. Available FX4™ Off-Road Package. Available equipment and aftermarket accessories. (Max. Gooseneck Towing 21,400 lbs. and Max. Conventional Towing 20,000 lbs. when equipped with the 8' box and available diesel engine.)

1. Max. gooseneck tow rating of 37,000 lbs. available on F-450 Regular Cab 4x2 with diesel engine (not shown). Max. towing varies based on cargo, vehicle configuration, accessories and number of passengers. **2.** Driver-assist features are supplemental and do not replace the driver's attention, judgment and need to control the vehicle. It does not replace safe driving. See owner's manual for details and limitations. **3.** Please consult your owner's manual or Pro Trailer Backup Assist Quick Start Guide for information on setting up your trailer.

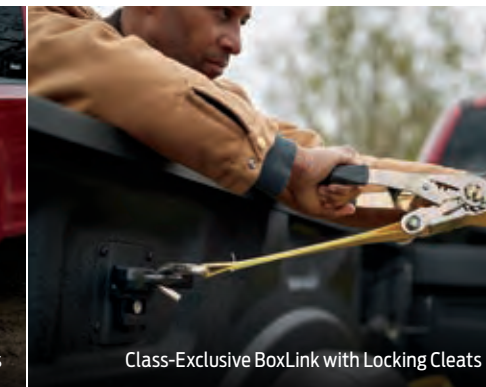
BEST-IN-CLASS
7,850 LBS.
MAX. AVAILABLE PAYLOAD¹

BEST-IN-CLASS PAYLOAD. HAUL IT. TONS OF IT.

There's no doubt that having the right tools can help improve on-the-job productivity. Starting with F-Series Super Duty® pickup. When you can haul a max. available payload of 7,850 lbs.,¹ there's rarely a need to make a second trip. Its fortified cargo box – made from high-strength, military-grade, aluminum alloy² – doesn't rust, resists corrosion, and comes in 6.75' and 8' lengths. Around this hardworking box is a helpful array of available features that help you utilize its space to the fullest: extended-length step bars, integrated tailgate step, LED box lighting, remote tailgate release, BoxLink™ with locking cleats, and stowable loading ramps. Helping you become as proficient and productive as possible. 24/7.



LED Box Lighting/Class-Exclusive Stowable Loading Ramps



Class-Exclusive BoxLink with Locking Cleats



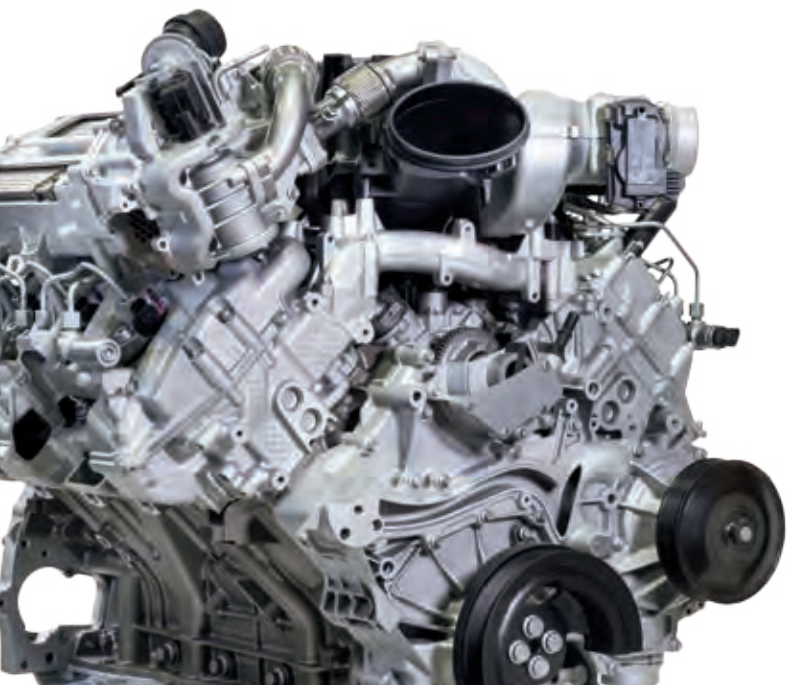
Tailgate Step

F-350 DRW XL REGULAR CAB 4x2. Oxford White. Available STX® and F-350 Gas Heavy-Duty Payload Packages. Available equipment.

1. Max. payload of 7,850 lbs. available on F-350 DRW Regular Cab Long Box 4x2 with 6.2L engine and available F-350 Gas Heavy-Duty Payload Package. Max. payload varies and is based on accessories and vehicle configuration. See label on door jamb for carrying capacity of a specific vehicle. **2.** 6000-series aluminum alloy.

POTENT POWER.

In heavy-duty trucks, torque is the name of the game. And Super Duty® pickup has made a name for itself with stump-pulling torque and horsepower from our available 6.7L Power Stroke® V8 Turbo Diesel and available 7.3L V8 gas engines. They join the standard 6.2L V8 gas on F-250 and F-350 to form a robust engine lineup. All 3 powerplants, along with an available TorqShift® 10-speed automatic transmission and the TorqShift-G 6-speed automatic, are engineered and assembled by Ford. So whichever Built Ford Tough® powertrain you choose, it's designed to work seamlessly with Super Duty chassis components and vehicle calibrations. Letting you focus on building a better world, one project at a time.



6.7L V8 TURBO DIESEL

BEST-IN-CLASS
MAX. AVAILABLE HORSEPOWER

1,050 LB.-FT.
475 TORQUE
HP

7.3L V8 GAS ENGINE

BEST GAS MAX. AVAILABLE TORQUE &
HORSEPOWER IN THE CLASS

475 LB.-FT.
430 TORQUE
HP

F-350 DRW LARIAT™ CREW CAB 4x4. Iconic Silver Metallic. Available equipment.
Horsepower and torque are independent attributes and may not be achieved simultaneously.

6.7L POWER STROKE V8 TURBO DIESEL
1,050 LB.-FT. MAX. TORQUE | 475 MAX. HORSEPOWER

A 36,000-psi fuel-injection system helps it optimize combustion and provide excellent throttle response. Forged-steel pistons provide high firing pressure capability and low friction for hardworking durability. A turbocharger with fully electronic vane actuator helps cold-weather performance, while the grille design ensures plenty of airflow to help keep things cool.

7.3L 2-VALVE V8 GAS
475 LB.-FT. MAX. TORQUE | 430 MAX. HORSEPOWER

Built from the ground up as a dedicated truck engine, this beast is the largest displacement V8 engine in the class. To help maintain optimum engine performance, its stout design features: cast-iron engine block construction; a forged-steel crankshaft; carbon-nitrided needle bearings in the valvetrain; robust pistons and ring packs with anti-wear coatings; piston cooling jets; and a variable-displacement oil pump located in the pan. Tough lives here.

6.2L 2-VALVE V8 GAS
430 LB.-FT. MAX. TORQUE | 385 MAX. HORSEPOWER

By supplying working power throughout the rpm range, the 6.2L V8 delivers an impressive combination of driveability, hauling and towing performance. Dual-equal variable cam timing phases the intake- and exhaust-valve opening and closing events simultaneously to help optimize low-end torque and peak horsepower.



TAKE ADVANTAGE OF ALL THAT POWER.



AVAILABLE POWER TAKEOFF (PTO)
OUTPUT UP TO

**300 LB.-FT.
TORQUE**



TORQSHIFT® 10-SPEED AUTOMATIC TRANSMISSION

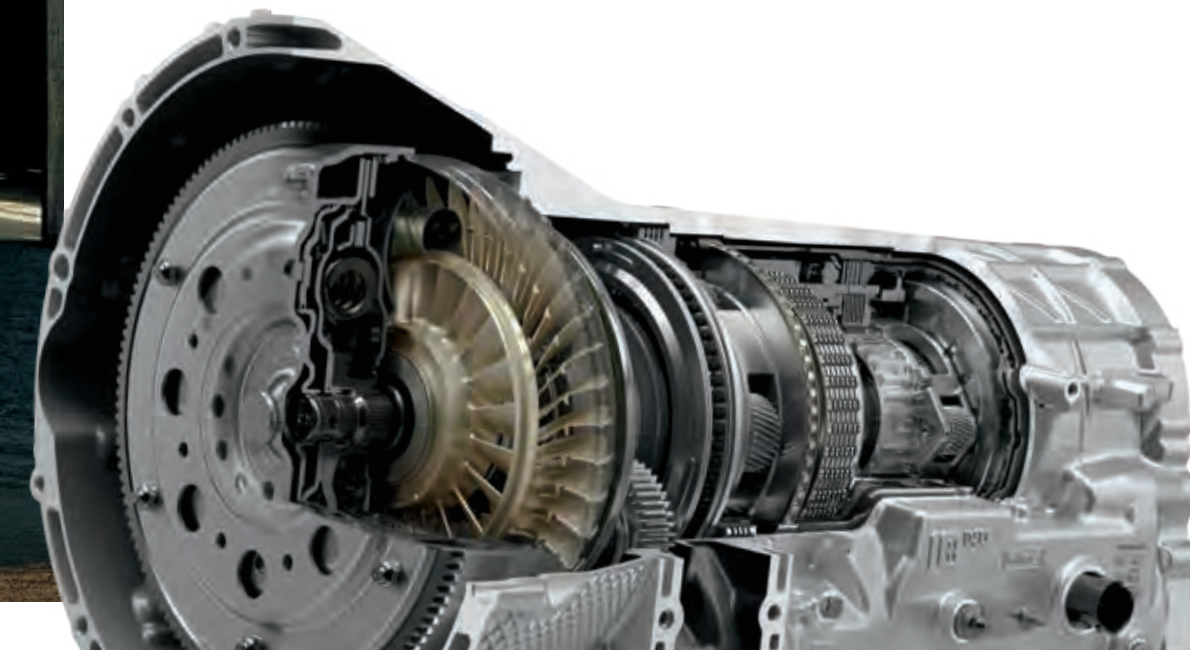
Smooth and efficient power delivery provides the strength and capability to get the job done in the unforgiving landscapes where Super Duty® pickup excels. Our robust, available TorqShift 10-speed automatic – which can be paired with all 3 engines – is calibrated specifically for heavy-duty work. With a tall 4.615 1st-gear ratio producing outstanding starting torque, the 10-speed also offers a wide range of overdrive gears. An advanced hydraulic control system supplies smooth, fast shifts and exceptional gear selection.

SELECTABLE DRIVE MODES

Match your mode to the road with Tow/Haul, Deep Snow/Sand, Slippery, Normal and Eco. The available TREMOR™ Off-Road Package adds a Rock Crawl drive mode.

LIVE-DRIVE PTO PROVISION

With stationary- and mobile-mode operations, the available PTO provision can power snow plows, generators, sprayer pumps and more. Directly linked to the engine crankshaft, the PTO output gear delivers power anytime the engine is running – whether the truck is moving or not. The available diesel powertrain includes split-shaft capability, which allows for the operation of multiple accessories at the same time when the truck is stopped.



F-250 KING RANCH® CREW CAB 4x4. Antimatter Blue/Stone Gray Metallic two-tone. Available 5th-Wheel/Gooseneck Trailer Tow Prep Package. Available equipment.

1. Stationary-mode PTO max. torque ratings: 300 lb.-ft. on diesel, 250 lb.-ft. on gas. Mobile-mode PTO max. torque ratings: 200 lb.-ft. on diesel, 125 lb.-ft. on 7.3L gas, 115 lb.-ft. on 6.2L gas.



LARIAT™ CREW CAB 4x4. Baja interior. Available TREMOR™ Package. Available equipment.
Don't drive while distracted or while using handheld devices. Use voice-operated systems when possible.

1. FordPass Connect, the FordPass App, and complimentary Connected Service are required for remote features (see FordPass Terms for details). Connected service and features depend on compatible AT&T network availability. Evolving technology/cellular networks/vehicle capability may limit functionality and prevent operation of connected features. Connected service excludes Wi-Fi hotspot. 2. Wi-Fi hotspot includes complimentary wireless data trial that begins upon AT&T activation and expires at the end of 3 months or when 3GB of data is used, whichever comes first. To activate, go to www.att.com/ford. 3. Qi wireless charging may not be compatible with all mobile phones. 4. Some features may be locked out while the vehicle is in gear. Not all features are compatible with all phones. 5. Requires phone with active data service and compatible software. SYNC 3/SYNC 4 does not control 3rd-party products while in use. 3rd parties are solely responsible for their respective functionality. 6. Navigation services require SYNC 4 and FordPass Connect, complimentary connect service and the FordPass App (see FordPass Terms for details). Eligible vehicles may receive a complimentary 90-day trial of navigation services, or if applicable, a 3-year trial of built-in navigation services that begin on the new vehicle warranty start date. Customers must unlock the navigation service trial by activating the eligible vehicle with a FordPass member account. If not subscribed by the end of the complimentary period, the navigation service will terminate, or depending on vehicle, the built-in connected navigation service will terminate. Built-in navigation system will revert to embedded offline navigation after termination. FordPass App, compatible with select smartphone platforms, is available via download. Message and data rates may apply.

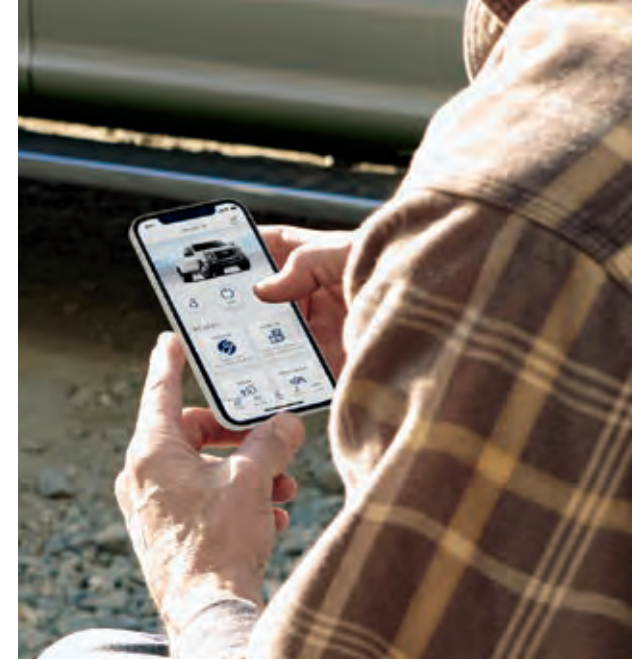
DESIGNED TO HELP YOU STAY CONNECTED.

Being connected today means you don't have to miss out on that project bid because you're out of touch. Before you even head to the job site, you can check in with dispatch from the cabin of your Super Duty® truck using standard FordPass™ Connect¹ with 4G LTE Wi-Fi hotspot capability² and your laptop or smartphone. An available wireless charging pad³ keeps that phone charged and ready to go at your destination.

As you drive, keep your eyes on the road – and your hands firmly on the wheel – with one of 3 available voice-activated SYNC® Technology systems.⁴ Two of the versions also have an LCD capacitive touchscreen. With its sleek, user-friendly interface, SYNC is much more than the ability to make calls and play your favorite music – it's about making connectivity fast, smart and simple, whichever version you choose.



SCAN TO LEARN MORE
or visit Ford.com/SYNC
Data rates may apply.



SYNC

- 4.2" LCD screen
- SYNC AppLink®
- 1 smart-charging USB port
- Standard on XL

SYNC 3

- 8" LCD touchscreen
- SYNC AppLink
- Apple CarPlay® compatibility⁵
- Android Auto™ compatibility⁵
- 2 smart-charging USB ports
- Standard on XLT, optional on XL

SYNC 4: NEW FOR 2022

- 12" LCD touchscreen with Information On Demand panel
- SYNC AppLink with App Catalog
- Wireless phone connection
- Wireless Apple CarPlay compatibility⁵
- Wireless Android Auto compatibility⁵
- Cloud connected
- Conversational enhanced voice recognition
- Digital owner's manual
- Connected navigation options¹⁶
- Standard on LARIAT, KING RANCH,[®] PLATINUM[®] and LIMITED

7 WAYS TO HELP BOOST YOUR PRODUCTIVITY.



LIMITED CREW CAB 4x4. Admiral Blue/Light Slate interior. Available equipment.

Inside the hardworking 2022 Super Duty® pickup, loads of storage areas swallow tools and supplies, while easy-to-navigate controls, plenty of cupholders, and large dials and switches help you stay highly productive – even with work gloves on. An available sliding center console panel even lets you adjust how that space is split between cupholders and storage. These productivity enhancers join a long list of amenities that help make any haul in Super Duty as comfortable and productive as possible.

A. POWER-ADJUSTABLE PEDALS

This available feature helps make the long drive as comfortable as possible. Available with or without memory.

B. 8" COLOR LCD PRODUCTIVITY SCREEN

On LARIAT™ and above models, this feature allows you to configure the instrument cluster and even customize your own home screen.

C. EASY-TO-ENGAGE 4WD

Engaging available 4WD is as simple as setting the manual-locking front hubs to AUTO and turning this dial.

D. LARGE 12" LCD TOUCHSCREEN

This available touchscreen serves up large camera views for trailer hookup and maneuvering, plus an Information On Demand panel.

E. WIRELESS CHARGING¹

To keep your phone battery topped off, open the media bin door and set it on the available induction pad. No cord. No hassle.

F. 110V/400W AC POWER OUTLETS

Power small tools, battery chargers or laptops with these available covered outlets.

G. B&O™ SOUND SYSTEM

With 10 high-performance speakers and 1,000 watts of precision digital audio, this available feature can help you unwind.

1. Qi wireless charging may not be compatible with all mobile phones.

THERE'S NOTHING LIKE RIDING IN FIRST CLASS.

With new Admiral Blue and Light Slate leather seats and a large 12" touchscreen centering the instrument panel, Super Duty® LIMITED looks better than ever. The functional and roomy cabin of every Super Duty pickup helps you get your jobs done, whether you're transporting a crew of workers or loading it up with cargo. SuperCab™ models feature rear-hinged rear doors that open wide, making loading and unloading a snap. SuperCab and Crew Cab models feature a flat rear load floor that makes it easy to load large items. And Crew Cab models offer convenient, available under-seat storage (shown at right) that can be raised, divided and locked when the rear seat cushion is lowered. When not needed, it folds away to maintain a flat load floor. One more reason to enjoy the time you spend at this office.

A. REAR UNDER-SEAT STORAGE

Hold items in place with this available feature. To hide what you've stored, fold the seat down and lock it for security.

B. HEATED 10-WAY POWER DRIVER'S SEAT

Includes ventilation, power recline, power lumbar and memory. An available option with real perks.

C. 6 UPFITTER SWITCHES

Available 40- and 25-amp switches let you easily power aftermarket accessories.

D. TWIN-PANEL MOONROOF

This available feature offers expansive coverage, bathing the cabin in natural light.

E. UP TO 43.6" REAR SEAT LEG ROOM

Stretch out your legs and enjoy the ride in Crew Cab models.

LIMITED CREW CAB 4x4. Admiral Blue/Light Slate Venetian leather front and rear seats. Available equipment.





STANDARD

TRAILER SWAY CONTROL

This helpful technology monitors the motions of Super Duty when towing to detect trailer sway.¹ If it's detected, the system selectively applies brakes as needed to help you maintain control of the truck as well as the trailer.

CONFIDENCE MILE AFTER MILE.

From the work site to the highway, we can all use more confidence on the road. That's why the F-Series Super Duty® pickup offers an extensive, well-rounded collection of standard and available driver-assist technologies. These advanced features are about supplementing your driving skills.² Helping you feel confidently in command at the wheel.

FORD CO-PILOT360™ TECHNOLOGY²

STANDARD FEATURES

- Autolamp (Automatic On/Off Headlamps)
- Hill Start Assist
- Rear View Camera with Dynamic Hitch Assist
- Trailer Sway Control

AVAILABLE FEATURES

- | | |
|---|---|
| • Adaptive Cruise Control | • Lane-Keeping Alert with Driver Alert System |
| • Adaptive Steering | • Pre-Collision Assist with Automatic Emergency Braking |
| • Audible Lane Departure Warning | • Rain-Sensing Windshield Wipers |
| • Auto High-Beam Headlamps | • Rear Parking Sensors |
| • BLIS® (Blind Spot Information System) with Trailer Coverage and Cross-Traffic Alert | • Ultimate Trailer Tow Camera System |

SCAN TO LEARN MORE
or visit [Ford.com/Technology](https://ford.com/Technology)
Data rates may apply.



F-350 PLATINUM® CREW CAB 4x4. Star White Metallic Tri-coat.³ Available TREMOR™ Off-Road Package. Available and aftermarket equipment.

1. Remember that even advanced technology cannot overcome the laws of physics. It's always possible to lose control of a vehicle due to inappropriate driver input for the conditions. **2.** Driver-assist features are supplemental and do not replace the driver's attention, judgment and need to control the vehicle. It does not replace safe driving. See owner's manual for details and limitations. **3.** Additional charge.

GET A LIFT IN TREMOR.

With its impressive 10.8" of ground clearance, the available TREMOR™ Off-Road Package can turn your Super Duty® pickup into a highly capable off-road machine. Without compromising its heavy-duty capability (max. available towing of 21,800 lbs¹ and max. available payload of 4,150 lbs²), a TREMOR equipped Super Duty adds rock crawling, steep hill climbs, and mud bogging to its already formidable list of skills. Give your LARIAT™ through PLATINUM® model a lift with the available TREMOR Off-Road Package.

TREMOR HIGHLIGHTS

Gnarly 35" Diameter Off-Road Tires

Trail Control™

Limited-Slip Front Differential

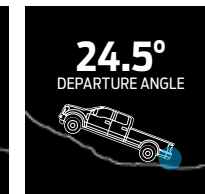
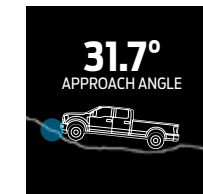
Electronic-Locking Rear Differential

Exclusive Rock Crawl Drive Mode

Available Ford Performance Parts Winch by WARN®

Always consult the owner's manual before off-road driving, know your terrain and trail difficulty, and use appropriate safety gear.

F-250 LARIAT CREW CAB 4x4. Antimatter Blue Metallic. Available Black Appearance and TREMOR Off-Road Packages. Available equipment. (Max. Gooseneck Towing 16,400 lbs. and Max. Payload 2,823 lbs. when equipped with the 6.75' box, the available 7.3L gas engine, and the available TREMOR Off-Road Package.)



12,000 LBS. OF WINCHING POWER.

This available Ford Performance Parts winch by WARN extends TREMOR capability even further. Includes high-tensile-strength cable. The only wireless remote in its class. Available on both diesel and gas TREMOR models, the winch is also available on other Super Duty models.

BEST WATER-FORDING DEPTH IN THE CLASS.

TREMOR has 33" of water-fording capability,³ aided by unique front springs that increase ride height, and extended axle vent tubes.

1. Max. gooseneck tow rating of 21,800 lbs. available on F-350 SRW Crew Cab 4x4 with 6.75' box, 6.7L diesel engine and available TREMOR Off-Road Package (not shown). Max. towing varies based on cargo, vehicle configuration, accessories and number of passengers. **2.** Max. payload rating of 4,150 lbs. available on F-350 SRW Crew Cab 4x4 with 6.75' box, 7.3L gas engine and available TREMOR Off-Road Package (not shown). Max. payload varies and is based on accessories and vehicle configuration. See label on door jamb for carrying capacity of a specific vehicle. **3.** Always determine the water depth before attempting a crossing and proceed slowly. Refer to your owner's manual for detailed information regarding driving through water.

Payload and towing are independent attributes and may not be achieved simultaneously.

ROCK SOLID WHERE IT MATTERS MOST.

Built to handle your toughest jobs, Super Duty® pickups endure millions of miles of virtual and real-world testing. Before punishing vehicles at our proving grounds, we conduct virtual testing of components in the lab. We drive prototype vehicles at temperatures from -20°F to 120°F. We also put models in the hands of people like you, working in some of the harshest environments imaginable. Engine thermal shock tests swing ambient temperature 250°F in under 2 minutes, while powertrain tests replicate going up a 6% grade for over 500 miles without stopping. The Super Duty lineup also endures 4-post frame-twists, gravel, water, and salt brine and mud baths. We do it all so you can drive a Ford F-Series® – the toughest trucks we know how to build.

HIGH STRENGTH – DOESN'T RUST

The Super Duty body and cargo box are made from high-strength, military-grade, aluminum alloy¹ that's hardened through heat treating for even greater strength. Plus, the body and cargo box don't rust and resist corrosion. That's leadership that counts. For years down the road.

ENGINEERED FOR EXTREMES

To handle the monstrous torque output of Super Duty pickup, driveshafts, transfer cases and U-joints are engineered for extreme duty. In conditions where additional traction is needed, an electromagnetic clutch in the 4WD transfer case provides smooth and immediate shift-on-the-fly capability.

2.5" AND 3" TRAILER HITCH RECEIVERS

Using so much high-strength steel that weight-equalizing bars aren't needed – these receivers are integrated right into the frame – saving time and effort with trailer hookups. On many configurations, hitches are weight-carrying up to the max. tow ratings.

STRONG AND CAPABLE REAR AXLES

Ratios range from 3.31 to 4.30. Available choices include non-limited-slip, limited-slip and electronic-locking. Gear and bearing designs are engineered and optimized by weight for the extreme capability of Super Duty.

F-450 XL REGULAR CAB 4x2. Oxford White. Available STX® Package. Available equipment.

1. 6000-series aluminum alloy.



XL/STX®



STANDARD
with optional equipment.



AVAILABLE XL VALUE PACKAGE
with optional equipment.



AVAILABLE STX PACKAGE
with optional equipment.

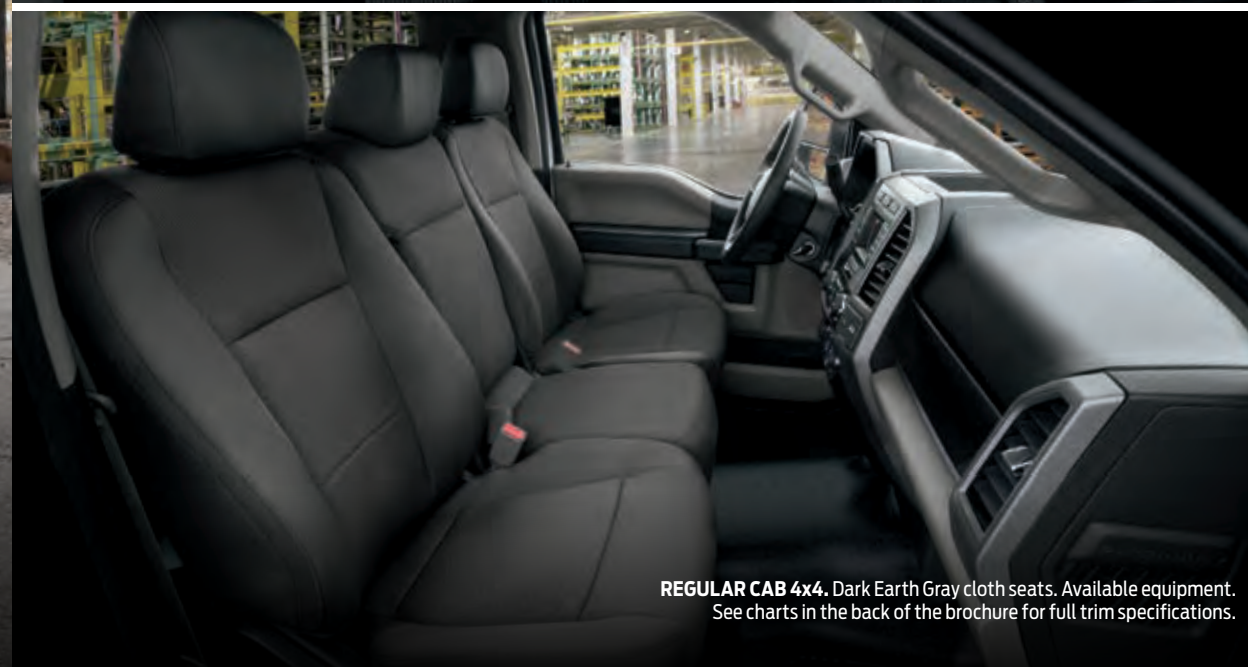


F-350 REGULAR CAB 4x4. Oxford White. Available equipment.

1. FordPass Connect, the FordPass App, and complimentary Connected Service are required for remote features (see FordPass Terms for details). Connected service and features depend on compatible AT&T network availability. Evolving technology/cellular networks/vehicle capability may limit functionality and prevent operation of connected features. Connected service excludes Wi-Fi hotspot. At purchase, the FordPass Connect modem is connected and sending vehicle data (e.g., diagnostics) to Ford. To disable, or for more information, see in-vehicle connectivity settings. Learn more at FordConnected.com. **2.** Wi-Fi hotspot includes complimentary wireless data trial that begins upon AT&T activation and expires at the end of 3 months or when 3GB of data is used, whichever comes first. To activate, go to www.att.com/ford.



REGULAR CAB 4x4. Available equipment.



REGULAR CAB 4x4. Dark Earth Gray cloth seats. Available equipment. See charts in the back of the brochure for full trim specifications.

XL/STX HIGHLIGHTS

SYNC® with 4.2" LCD screen
and 1 smart-charging USB port
FordPass™ Connect¹ with 4G LTE
Wi-Fi hotspot capability²
Autolamp (Automatic On/Off Headlamps)
Rear View Camera with Dynamic Hitch Assist
Black vinyl flooring

REGULAR CAB | 8' BOX

F-250 SRW, F-350 SRW,
F-350 DRW, F-450 DRW

SUPERCAB™ | 6.75' BOX

F-250 SRW, F-350 SRW

SUPERCAB | 8' BOX

F-250 SRW, F-350 SRW,
F-350 DRW

CREW CAB | 6.75' BOX

F-250 SRW, F-350 SRW

CREW CAB | 8' BOX

F-250 SRW, F-350 SRW,
F-350 DRW, F-450 DRW

FRONT 40/20/40 SPLIT BENCH SEAT

Standard

FRONT BUCKET SEATS WITH MINI CONSOLE

Available

XLT



STANDARD
with optional equipment.



AVAILABLE BLACK APPEARANCE PACKAGE
with optional equipment.



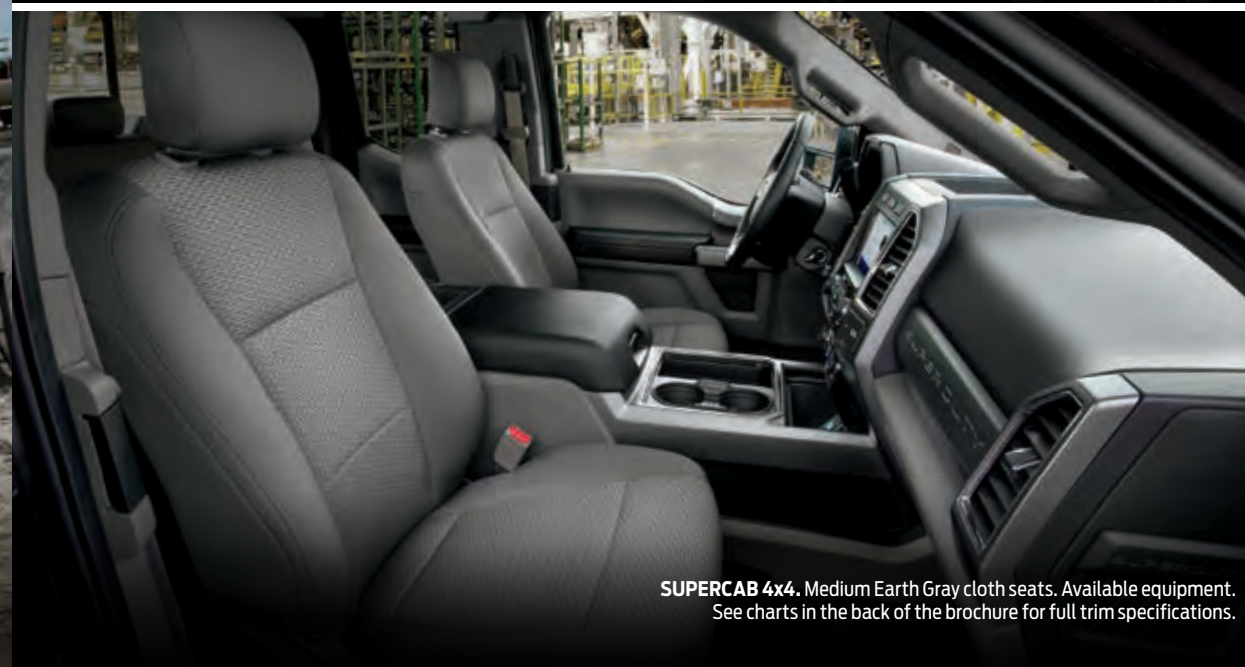
AVAILABLE XLT PREMIUM PACKAGE
with optional equipment.



F-250 SUPERCAB 4x4. Atlas Blue Metallic. Available XLT Premium and FX4™ Off-Road Packages. Available equipment.



SUPERCAB 4x4. Available equipment.



SUPERCAB 4x4. Medium Earth Gray cloth seats. Available equipment.
See charts in the back of the brochure for full trim specifications.

XLT HIGHLIGHTS

SYNC® 3 with 8" LCD touchscreen
and 2 smart-charging USB ports
Pre-Collision Assist
with Automatic Emergency Braking
BLIS® (Blind Spot Information System)
with Trailer Coverage
Trailer brake controller
Remote Keyless Entry System
110V/400W AC power outlet

REGULAR CAB | 8' BOX

F-250 SRW, F-350 SRW,
F-350 DRW, F-450 DRW

SUPERCAB™ | 6.75' BOX

F-250 SRW, F-350 SRW

SUPERCAB | 8' BOX

F-250 SRW, F-350 SRW,
F-350 DRW

CREW CAB | 6.75' BOX

F-250 SRW, F-350 SRW

CREW CAB | 8' BOX

F-250 SRW, F-350 SRW,
F-350 DRW, F-450 DRW

FRONT 40/20/40 SPLIT BENCH SEAT

Standard

FRONT BUCKET SEATS WITH CENTER CONSOLE

Available

LARIAT™



STANDARD
with optional equipment.



AVAILABLE BLACK APPEARANCE PACKAGE
with optional equipment.



AVAILABLE LARIAT SPORT PACKAGE
with optional equipment.



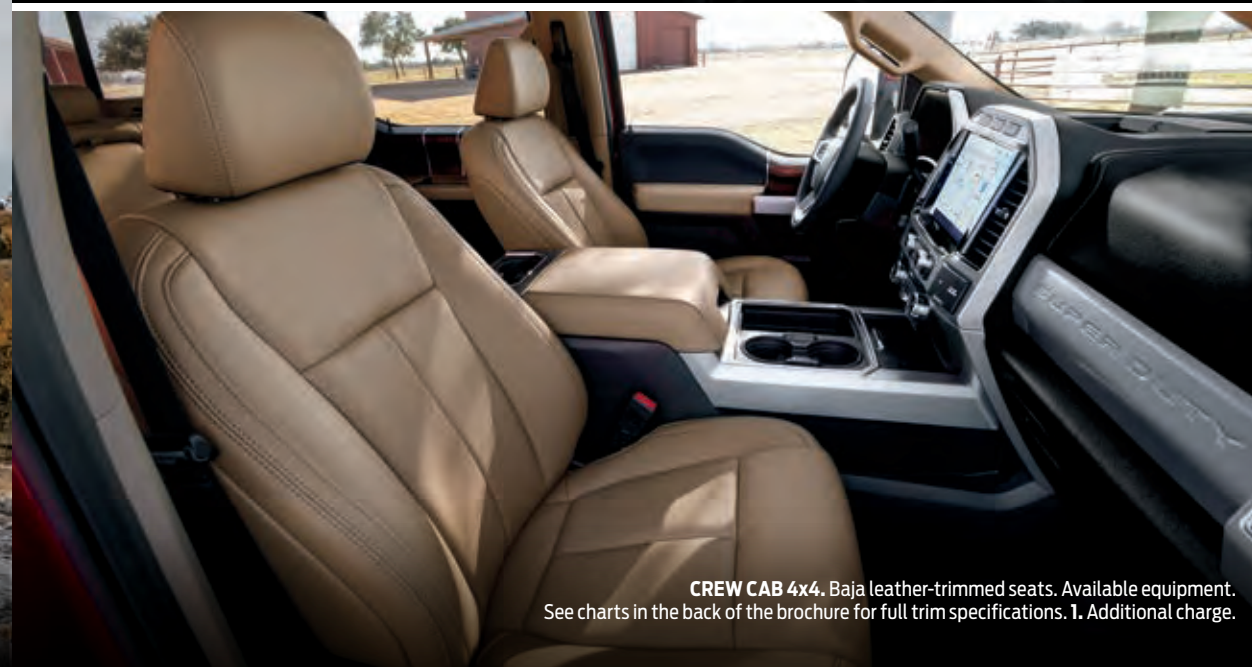
AVAILABLE TREMOR™ OFF-ROAD PACKAGE
with optional equipment.



F-250 CREW CAB 4x4. Rapid Red Metallic Tinted Clearcoat.¹ Available Chrome and FX4™ Off-Road Packages. Available equipment and aftermarket accessories. Try to avoid water higher than the bottom of the hubs and proceed slowly. Refer to your owner's manual for detailed information regarding driving through water.



CREW CAB 4x4. Available equipment.



CREW CAB 4x4. Baja leather-trimmed seats. Available equipment. See charts in the back of the brochure for full trim specifications. **1.** Additional charge.

LARIAT HIGHLIGHTS

SYNC® 4 with Enhanced Voice Recognition
and 12" LCD center stack touchscreen
Dual-zone electronic automatic
temperature control
Power-sliding rear window with defroster
SecuriCode® keyless entry keypad
PowerScope® power-telescoping/
-folding trailer tow mirrors

SUPERCAB™ | 6.75' BOX

F-250 SRW, F-350 SRW

SUPERCAB | 8' BOX

F-250 SRW, F-350 SRW,
F-350 DRW

CREW CAB | 6.75' BOX

F-250 SRW, F-350 SRW

CREW CAB | 8' BOX

F-250 SRW, F-350 SRW,
F-350 DRW, F-450 DRW

FRONT BUCKET SEATS WITH CENTER CONSOLE

Standard

FRONT 40/20/40 SPLIT BENCH SEAT

Available

KING RANCH®



AVAILABLE CHROME PACKAGE



AVAILABLE MONOCHROMATIC PAINT PACKAGE



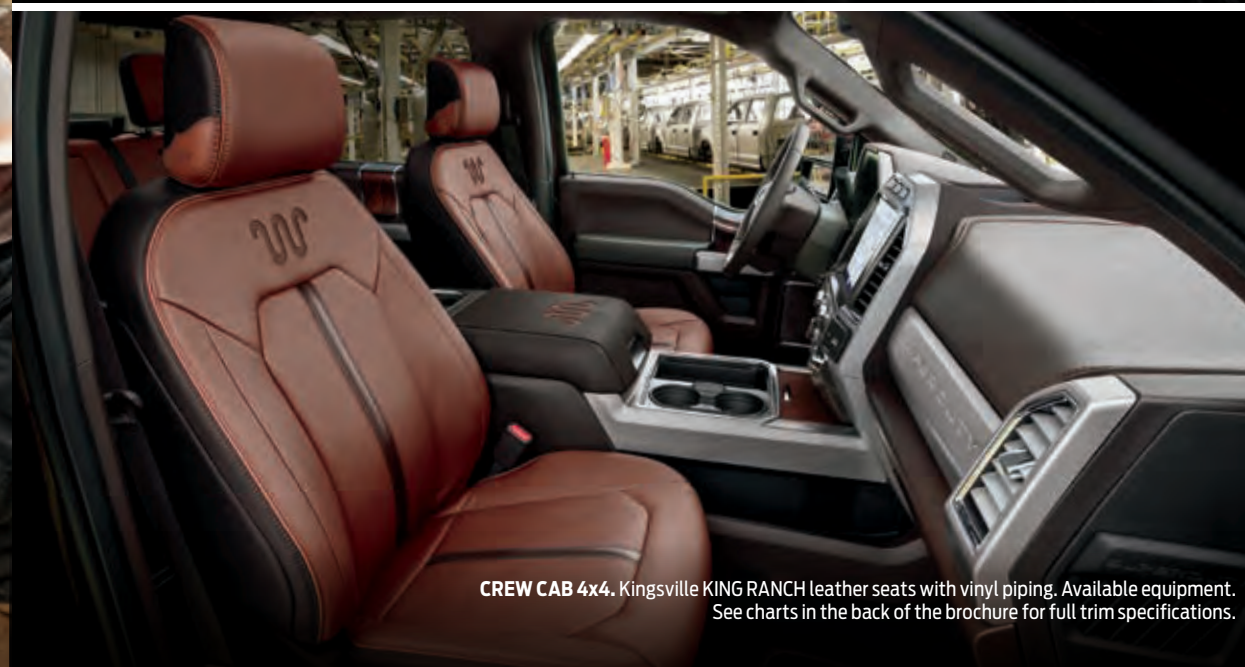
AVAILABLE TREMOR™ OFF-ROAD PACKAGE



F-350 DRW CREW CAB 4x4. Agate Black/Stone Gray Metallic two-tone. Available FX4™ Off-Road Package. Available equipment.



CREW CAB 4x4. Available equipment.



CREW CAB 4x4. Kingsville KING RANCH leather seats with vinyl piping. Available equipment. See charts in the back of the brochure for full trim specifications.

KING RANCH HIGHLIGHTS

Ultimate Trailer Tow Camera System
with Pro Trailer Backup Assist™
Intelligent Access with push-button start
Remote tailgate release
Java interior with genuine Khaya Wood accents

CREW CAB | 6.75' BOX

F-250 SRW, F-350 SRW

CREW CAB | 8' BOX

F-250 SRW, F-350 SRW,
F-350 DRW, F-450 DRW

FRONT BUCKET SEATS

WITH CENTER CONSOLE

Standard

PLATINUM[®]



STANDARD



AVAILABLE TREMOR™ OFF-ROAD PACKAGE

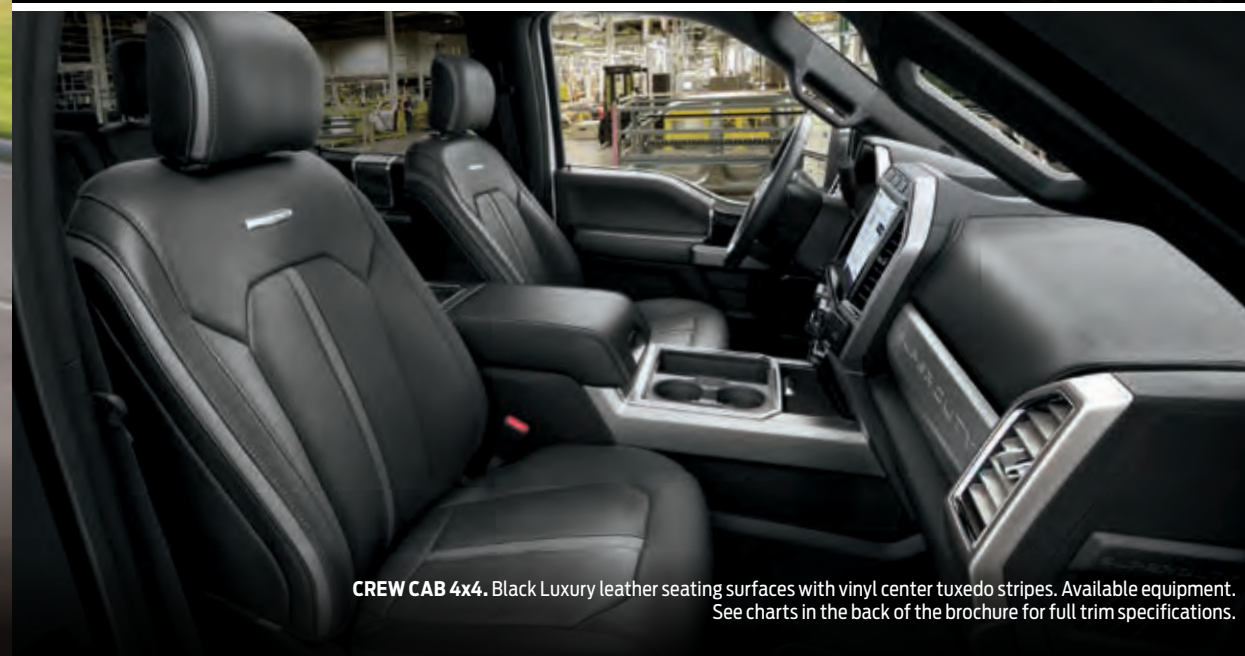


F-350 CREW CAB 4x4. Antimatter Blue Metallic. Available FX4™ Off-Road Package. Available equipment.

1. Navigation services require SYNC[®] 4 and FordPass Connect, complimentary connect service and the FordPass app (see FordPass Terms for details). Eligible vehicles receive a complimentary 3-year trial of navigation services that begins on the new vehicle warranty start date. Customers must unlock the navigation service trial by activating the eligible vehicle with a FordPass member account. If not subscribed by the end of the complimentary period, the connected navigation service will terminate, and the system will revert to embedded offline navigation. Connected service and features depend on compatible AT&T network availability. Evolving technology/cellular networks/vehicle capability may limit functionality and prevent operation of connected features. FordPass App, compatible with select smartphone platforms, is available via a download. Message and data rates may apply.



CREW CAB 4x4. Dark Marsala interior. Available equipment.



CREW CAB 4x4. Black Luxury leather seating surfaces with vinyl center tufted stripes. Available equipment. See charts in the back of the brochure for full trim specifications.

PLATINUM HIGHLIGHTS

Connected Built-in Navigation¹
Ultimate Trailer Tow Camera System
with Pro Trailer Backup Assist™
Intelligent Access with push-button start
Adaptive Cruise Control
Platinum brushed-aluminum and genuine Onyx
Argento Open Pore wood interior accents

CREW CAB | 6.75' BOX

F-250 SRW, F-350 SRW

CREW CAB | 8' BOX

F-250 SRW, F-350 SRW,
F-350 DRW, F-450 DRW

**FRONT BUCKET SEATS
WITH CENTER CONSOLE**
Standard

LIMITED



F-350 CREW CAB 4x4. Atlas Blue Metallic. Available FX4™ Off-Road Package. Available equipment.



CREW CAB 4x4. Available equipment.



CREW CAB 4x4. Admiral Blue/Light Slate Venetian leather seats. Available equipment. See charts in the back of the brochure for full trim specifications.

LIMITED HIGHLIGHTS

6.7L Power Stroke® V8 Turbo Diesel engine
Adaptive Steering
Ultimate Trailer Tow Camera System
with Pro Trailer Backup Assist™
Adaptive Cruise Control
Smoked brushed-aluminum and genuine Alpi
Recon and Blue Oak wood interior accents

CREW CAB | 6.75' BOX

F-250 SRW, F-350 SRW

CREW CAB | 8' BOX

F-250 SRW, F-350 SRW,
F-350 DRW, F-450 DRW

FRONT BUCKET SEATS

WITH CENTER CONSOLE

Standard

3 LEVELS
OF SUPER DUTY
CAPABILITY.

There’s capability. And then there’s Super Duty® pickup capability. Within each heavy-duty truck subsegment – 250/2500 Pickups, 350/3500 Pickups, 450 Pickups – an F-Series Super Duty puts up impressive numbers in these critical measures of all-around capability: max. gooseneck towing, max. conventional towing, and max. payload. Our owners expect it. The 2022 Super Duty delivers.



F-250 XL CREW CAB 4x4. Agate Black Metallic. (Max. Payload 3,278 lbs., Max. Conventional Towing 15,000 lbs., and Max. Gooseneck Towing 19,100 lbs., with available 6.7L diesel engine and available F-250 High-Capacity Trailer Tow Package); **F-350 LARIAT™ CREW CAB 4x4.** Carbonized Gray Metallic. (Max. Payload 3,728 lbs., Max. Conventional Towing 20,000 lbs., and Max. Gooseneck Towing 21,800 lbs., with available 6.7L diesel engine); **F-450 XLT CREW CAB 4x4.** Oxford White. (Max. Payload 5,153 lbs., Max. Conventional Towing 24,200 lbs., and Max. Gooseneck Towing 32,100 lbs.). All shown with available equipment.

NOTE: Max. towing varies based on cargo, vehicle configuration, accessories and number of passengers. Max. payload varies and is based on accessories and vehicle configuration. See label on door jamb for carrying capacity of a specific vehicle.

Payload and towing are independent attributes and may not be achieved simultaneously.

| | F-250 | F-350 | F-450 |
|---------------------------|--|---|-----------------------------------|
| SUBSEGMENT | 250/2500 Pickups² | 350/3500 Pickups³ | 450 Pickups⁴ |
| Max. Gooseneck Towing¹ | 22,800 lbs. – Leader | 35,750 lbs. | 37,000 lbs. |
| Max. Conventional Towing¹ | 20,000 lbs. | 21,200 lbs. | 24,200 lbs. – Best-in-Class |
| Max. Payload¹ | 4,260 lbs. | 7,850 lbs. – Best-in-Class⁵ | 6,210 lbs. – Leader |
| Engines | 6.2L Gas V8, 7.3L Gas V8, 6.7L Power Stroke® V8 Turbo Diesel | 6.2L Gas V8, 7.3L Gas V8, 6.7L Power Stroke V8 Turbo Diesel | 6.7L Power Stroke V8 Turbo Diesel |
| Drivetrains | Single Rear Wheel (SRW) 4x2 or 4x4 | SRW or Dual Rear Wheel (DRW) 4x2 or 4x4 | DRW 4x2 or 4x4 |
| Cab Types | Regular Cab, SuperCab,™ Crew Cab | Regular Cab, SuperCab, Crew Cab | Regular Cab Crew Cab |
| Box Lengths | 6.75' or 8' | 6.75' or 8' | 8' |
| Trim Levels | All | All | All |

STANDARD FEATURES

MECHANICAL & FUNCTIONAL

2.5" trailer hitch receiver (F-250; F-350 SRW Regular Cab/ SuperCab, except 164" WB with diesel engine; F-350 DRW with 6.2L engine)

3.0" trailer hitch receiver with 2.5"-3.0" sleeve reducer (F-350 SRW SuperCab 164" WB with diesel engine; F-350 SRW Crew Cab; F-350 DRW with 7.2L gas or 6.7L diesel engine; F-450)

4-wheel disc brakes with Anti-Lock Brake System (ABS)

5th-Wheel/Gooseneck Trailer Tow Prep Package (F-450): 1 under-bed frame crossmember, 5 pickup bed 5th-wheel/ gooseneck attachment points and close-out plugs, and an integrated 7-pin connector on the driver’s side pickup bed wall (see dealer for 5th-wheel/gooseneck hitch compatibility)

7-wire trailer tow wiring harness with relays and 7-/4-pin connector

Axle – Narrow-track front (F-250/F-350)

Axle – Wide-track front (F-450)

Front stabilizer bar

Heavy-duty gas shock absorbers

Intelligent Oil-Life Monitor® (diesel engine)

Jack (2-ton mechanical with SRW; 4-ton hydraulic with DRW)

Leaf-spring rear suspension

Oil-life minder (gas engine)

Spare wheel, tire, lock and frame-mounted carrier (optional with pickup box delete)

Stationary Elevated Idle Control (SEIC)⁶

Trailer brake controller with Smart Trailer Tow Connector (DRW)

Twin-coil monobeam front suspension (4x4 and F-450 4x2)

Twin-I-Beam coil spring front suspension (F-250/F-350 4x2)

FORD CO-PILOT360™ TECHNOLOGY

Autolamp (Automatic On/Off Headlamps)

Hill Start Assist

Rear View Camera with Dynamic Hitch Assist

Trailer Sway Control

CONNECTIVITY & ENTERTAINMENT

12V powerpoint in instrument panel

FordPass™ Connect⁷ with 4G LTE Wi-Fi hotspot capability⁸

EXTERIOR

Center high-mounted stop lamp (CHMSL) with cargo lamp

Configurable daytime running lamps

Front splash guards (F-450)

Front tow hooks

LED roof marker/clearance lamps (DRW)

Pickup box with rail and tailgate moldings, and 4 tie-down hooks

Removable tailgate with key lock

Variable-intermittent windshield wipers with washers

SAFETY & SECURITY

AdvanceTrac™ with RSC® (Roll Stability Control™)

Driver and right-front-passenger front airbags⁹ front-seat side airbags⁹ and Safety Canopy® System with side-curtain airbags⁹ and rollover sensor

Front-passenger airbag deactivation switch

Individual Tire Pressure Monitoring System

(F-250/F-350; excludes spare)

MyKey® technology to help encourage responsible driving

SecuriLock® Passive Anti-Theft System

SOS Post-Crash Alert System™

1. Available rating. When properly configured with available equipment. See Towing and Payload charts in the Specifications section for maximum ratings by configuration. **2.** 250/2500 pickup subsegment includes Ford F-250 Super Duty, GMC Sierra 2500, Chevrolet Silverado 2500, Ram 2500 and Nissan Titan XD. **3.** 350/3500 pickup subsegment includes Ford F-350 Super Duty, GMC Sierra 3500, Chevrolet Silverado 3500, and Ram 3500. **4.** 450 pickup subsegment includes Ford F-450 Super Duty. **5.** Class is Full-Size Pickups over 8,500 lbs. GVWR. **6.** Final-stage manufacturer must supply control switches. **7.** FordPass Connect, the FordPass App, and complimentary Connected Service are required for remote features (see FordPass Terms for details). Connected service and features depend on compatible AT&T network availability. Evolving technology/cellular networks/vehicle capability may limit functionality and prevent operation of connected features. Connected service excludes Wi-Fi hotspot. **8.** Wi-Fi hotspot includes complimentary wireless data trial that begins upon AT&T activation and expires at the end of 3 months or when 3GB of data is used, whichever comes first. To activate, go to www.att.com/ford. **9.** Always wear your safety belt and follow airbag warning label instructions. **10.** Restrictions may apply. See your dealer for details. **11.** Requires available 5th-Wheel/Gooseneck Trailer Tow Prep Package.

| | XL | XLT | LARIAT™ | KING RANCH® | PLATINUM® | LIMITED | |
|---|----|-----|---------|-------------|-----------|---------|--|
| | S | S | S | S | S | | ENGINES & TRANSMISSIONS 6.2L 2-valve gas V8 FFV engine with TorqShift-G 6-speed SelectShift® automatic transmission with Selectable Drive Modes (F-250) |
| | S | S | S | S | S | | 6.2L 2-valve gas V8 FFV engine with TorqShift® 10-speed SelectShift automatic transmission with Selectable Drive Modes (F-350) |
| | 0 | 0 | 0 | 0 | 0 | | 7.3L 2-valve gas V8 FFV engine with TorqShift 10-speed SelectShift automatic transmission with Selectable Drive Modes (F-250/F-350) |
| | 0 | 0 | 0 | 0 | 0 | S | 6.7L Power Stroke V8 Turbo Diesel engine with TorqShift 10-speed SelectShift automatic transmission with Selectable Drive Modes (F-250/F-350) |
| | S | S | S | S | S | S | 6.7L Power Stroke V8 Turbo Diesel engine with TorqShift 10-speed SelectShift automatic transmission with Selectable Drive Modes (F-450) |
| | S | S | S | | | | MECHANICAL & FUNCTIONAL 4x2 rear-wheel drive |
| | 0 | 0 | 0 | S | S | S | 4x4 electronic shift-on-the-fly (ESOF) transfer case with manual-locking front hubs |
| | S | | | | | | 650-CCA, 72-amp-hr single battery (gas) |
| | | S | S | S | S | | 750-CCA, 78-amp-hr single battery (gas) |
| % | % | % | % | % | S | | 750-CCA, 78-amp-hr dual batteries (standard diesel; optional gas) |
| % | S | S | S | S | S | S | Trailer brake controller with Smart Trailer Tow Connector (standard on DRW, optional on XL SRW) |
| | 0 | 0 | | | | | Engine idle shutdown (5-, 10-, 15- or 20-minute) |
| | 0 | 0 | | | | | Operator-commanded exhaust filter regeneration (diesel engine) |
| | 0 | 0 | 0 | 0 | 0 | 0 | Engine block heater |
| | 0 | 0 | 0 | 0 | 0 | 0 | Power takeoff (PTO) provision with live-drive mobile and stationary modes¹⁰ (requires 10-speed transmission; PTO port located on driver’s side; split-shaft capability included with diesel engine only) |
| S | S | | | | | | Steering – Hydraulic power-assisted |
| P | P | S | S | S | S | S | Steering – Electronically controlled hydraulic¹⁰ (included with Pro Trailer Backup Assist™) |
| | 0 | 0 | 0 | 0 | 0 | 0 | Trailer tow – 5th-wheel hitch¹⁰,¹¹ (19,000-lb. rating on SRW, 32,500-lb. rating on DRW) |
| | 0 | 0 | 0 | 0 | 0 | 0 | Trailer tow – Gooseneck dual hitch kit¹⁰,¹¹ includes one 2 5/16" gooseneck ball, one 3" gooseneck ball, and 2 safety chain tie-down bars (F-450) |
| | 0 | 0 | 0 | 0 | 0 | 0 | Trailer tow – Gooseneck hitch kit¹⁰,¹¹ (F-250/F-350) |
| | 0 | 0 | 0 | 0 | 0 | 0 | Upfitter interface module (Fleet only) |
| | 0 | 0 | 0 | 0 | 0 | 0 | 12,000-lb. Ford Performance Parts winch by WARN® with wireless and wired remote controls, and 70-ft. high-tensile-strength, abrasion-resistant synthetic line¹⁰ (F-250/F-350 4x4) |
| | | 0 | 0 | 0 | 0 | 0 | Wheel locks (20" wheels only) |

S: STANDARD
O: OPTIONAL
P: PACKAGED

| | XL | XLT | LARIAT™ | KING RANCH® | PLATINUM® | LIMITED |
|--|----|-----|---------|-------------|-----------|---------|
| | 0 | 0 | 0 | 0 | 0 | 0 |
| | 0 | 0 | 0 | 0 | 0 | 0 |
| | 0 | 0 | 0 | 0 | 0 | 0 |
| | 0 | 0 | 0 | 0 | 0 | 0 |
| | 0 | 0 | 0 | | | |
| | 0 | | | | | |
| | 0 | | | | | |
| | 0 | 0 | | | | |
| | 0 | 0 | | | | |
| | 0 | 0 | 0 | 0 | | |

S: STANDARD

O: OPTIONAL

P: PACKAGED

FUNCTIONAL PACKAGES (continued)

Heavy-Service Front Suspension Package:¹ front springs upgrade (unless maximum springs have been computer-selected as included equipment)

Snow Plow Prep Package¹ (4x4): computer-selected springs for snow plow application; also includes upgraded alternator on select configurations

Camper Package:¹ front springs upgrade (unless maximum springs have been computer-selected as included equipment), rear stabilizer bar (SRW), auxiliary rear springs (F-250), and slide-in camper certification

CNG/Propane Gaseous Engine Prep Package (F-250/F-350 with 6.2L gas engine): hardened engine intake valves and valve seats, and bi-fuel manifold

F-250 High-Capacity Trailer Tow Package¹ (F-250 with diesel engine): 3.0" trailer hitch receiver, upgraded axle, 30,000-lb. GCWR, and GVWR over 10,500 lbs. (see Payload chart for ratings by configuration)

F-350 Diesel Heavy-Duty Payload Package¹ (F-350 DRW Regular Cab 4x2 with 6.7L diesel engine): 17" polished forged-aluminum wheels,² and front bucket seats with mini-console

F-350 Gas Heavy-Duty Payload Package¹ (F-350 Regular Cab 4x2 with 6.2L gas engine): TorqShift-G 6-speed SelectShift® automatic transmission, 17" polished forged-aluminum wheels² (DRW), and front bucket seats with mini-console

Heavy-Service Front Suspension Package For Pickup Box Delete¹ (SRW with pickup box delete): front springs upgrade (unless maximum springs have been computer-selected as included equipment), rear auxiliary springs (F-250), and rear stabilizer bar

Pickup Box Delete¹ (F-250/F-350 with 8' box only): deletes pickup box, tailgate, rear bumper, 7-/4-pin connector, CHMSL with cargo lamp, jack, spare wheel, tire, lock, carrier, and Rear View Camera (Rear View Camera and prep kit is available)

Snow Plow/Camper Package¹ (4x4): computer-selected front springs for snow plow application, rear stabilizer bar (SRW), auxiliary rear springs (F-250), and slide-in camper certification; also includes upgraded alternator on select configurations

AVAILABLE TRIM PACKAGES

XL

Power Equipment Group: accessory delay for power features; trailer tow mirrors with 2-way fold, power/heated glass, heated manual spotter mirrors, and integrated clearance lamps and turn signal indicators; Advanced Security Pack with inclination/intrusion sensors; power door and tailgate locks; power windows with front one-touch-up/-down feature; upgraded door-trim panels; and Remote Keyless Entry System

STX® Package:¹ chrome grille and bumpers, 18" cast-aluminum wheels with bright center caps and LT275/65Rx18E BSW all-season tires (SRW), 17" polished forged-aluminum wheels² (F-350 DRW), STX fender vent badges, and cruise control; DRW with 6.7L diesel engine also includes a high-airflow grille

XL Value Package:¹ chrome bumpers, bright center caps on wheels (SRW only), and cruise control

XLT

Black Appearance Package¹ (Crew Cab SRW 4x4): 6" black angular running boards; 20" high-gloss black-painted premium aluminum wheels with LT275/65Rx20E OWL all-terrain tires; black and smoke chrome Ford Oval logos on grille and tailgate; Agate Black Metallic-painted grille; body-color bumpers; halogen fog lamps; rear wheel-well liners; and Rear Parking Sensors

XLT Premium Package¹ (SuperCab™/Crew Cab): 18" chrome-like PVD aluminum wheels (SRW only); chrome front tow hooks, mirror caps, door and tailgate handles, 6" angular step bars, and exhaust tip; halogen fog lamps; SecuriCode® keyless entry keypad; rear under-seat storage; 8-way power driver's seat with heat; 2-way manual passenger seat with heat; and Rear Parking Sensors

XLT Value Package:¹ halogen fog lamps, SecuriCode keyless entry keypad, rear under-seat storage (SuperCab/Crew Cab), 8-way power driver's seat, and Rear Parking Sensors

LARIAT/KING RANCH/PLATINUM

TREMOR™ Off-Road Package¹ (Crew Cab SRW 4x4 with 6.75' box): 18" low-gloss black-painted aluminum wheels, 35" LT285/75Rx18 off-road tires and spare tire, wheel-lip moldings, unique front air dam, limited-slip front differential, electronic-locking rear differential, unique front springs for increased ride height, front and rear performance shocks, transfer case and fuel tank skid plates, extended axle vent tubes, low-profile off-road running boards, Rock Crawl drive mode, Trail Control™ TREMOR box decals, and Lane-Keeping Alert with Driver Alert System

LARIAT

Black Appearance Package¹ (Crew Cab SRW 4x4): 6" black angular running boards; 20" high-gloss black-painted premium aluminum wheels with LT275/65Rx20E OWL all-terrain tires; black and smoke chrome Ford Oval logos on grille and tailgate; Agate Black Metallic-painted grille, mirror caps and fender vent surrounds; headlamps with black-painted surrounds (LED headlamps only); body-color bumpers; Tough Bed® spray-in bedliner; and rear wheel-well liners

Chrome Package:¹ 18" chrome-like PVD aluminum wheels (SRW only) and chrome front tow hooks, mirror caps, door handles, 6" angular step bars, and exhaust tip

LARIAT Sport Package (SRW 4x4): body-color grille and bumpers; chrome exhaust tip; black platform running boards; and SPORT 4x4 box decals

LARIAT Ultimate Package¹ (Crew Cab): Remote Start System, LED CHMSL, LED box lighting, remote tailgate release, tailgate step, Intelligent Access with push-button start, power-tilt/-telescoping steering column with memory, Ice Blue ambient lighting, heated and ventilated front seats, easy-entry/-exit driver's seat with memory, memory feature for sideview mirrors and power-adjustable pedals, and wireless charging pad (requires front bucket seats)

LARIAT Value Package:¹ Remote Start System, LED CHMSL, LED box lighting, heated and ventilated front seats, easy-entry/-exit driver's seat with memory, and memory feature for sideview mirrors and power-adjustable pedals

KING RANCH

Chrome Package:¹ 20" chrome-like PVD aluminum wheels with KING RANCH center caps (SRW only); chrome front tow hooks, bumpers, mirror caps, door handles, 6" angular step bars, and exhaust tip; and KING RANCH chrome tailgate appliqué

KING RANCH Monochromatic Paint Package (requires **Chrome Package**): monochromatic paint and chrome bumpers; deletes Stone Gray two-tone lower accent color and Stone Gray wheel-lip moldings

KING RANCH Ultimate Package: quad-beam LED headlamps, LED fog lamps, LED taillamps, twin-panel moonroof, power-deployable running boards, and multicontour front bucket seats with Active Motion® massage functionality

DIMENSIONS

| | Regular Cab | SuperCab | | Crew Cab | |
|-------------------------|-------------------|----------------------|-------------------|----------------------|-------------------|
| | 8' Box 4x2/4x4 | 6.75' Box 4x2/4x4 | 8' Box 4x2/4x4 | 6.75' Box 4x2/4x4 | 8' Box 4x2/4x4 |
| Exterior (in.) | | | | | |
| Height (w/o options) | | | | | |
| F-250 SRW | 78.9/81.3 | 79.3/81.4 | 78.9/81.4 | 79.3/81.5 | 79.0/81.3 |
| F-350 SRW | 78.7/81.2 | 79.1/81.3 | 78.8/81.2 | 79.1/81.3 | 78.8/81.1 |
| F-350 DRW | 79.3/81.3 | | 79.0/81.3 | | 79.1/81.5 |
| F-450 DRW | 82.0/82.0 | | | | 82.1/82.1 |
| Width | | | | | |
| SRW (excl. mirrors) | 80.0 | 80.0 | 80.0 | 80.0 | 80.0 |
| DRW (excl. mirrors) | 96.0 | | 96.0 | | 96.0 |
| With mirrors | 105.9 | 105.9 | 105.9 | 105.9 | 105.9 |
| With mirrors extended | 110.0 | 110.0 | 110.0 | 110.0 | 110.0 |
| Length | 231.8 | 238.2 | 254.4 | 250.0 | 266.2 |
| Wheelbase | 141.6 | 148.0 | 164.2 | 159.8 | 176.0 |
| Ground clearance (min.) | | | | | |
| F-250 SRW | 8.7/8.5 | 8.7/8.5 | 8.7/8.5 | 8.7/8.5 | 8.7/8.5 |
| F-350 SRW | 8.7/8.5 | 8.7/8.5 | 8.7/8.5 | 8.8/8.5 | 8.7/8.5 |
| F-350 DRW | 8.4/8.3 | | 8.4/8.3 | | 8.4/8.3 |
| F-450 DRW | 8.6/8.6 | | | | 8.6/8.6 |

MECHANICAL

| Gross Axle Weight Ratings (GAWR) ³ (lbs.) | | | | Brakes | |
|--|-----|------------|-----------|---|--|
| | | Max. Front | Max. Rear | Rotor diameter (front/rear) – 14.29"/14.29" (F-250/F-350); 15.39"/15.75" (F-450) | |
| F-250 SRW | 4x2 | 5,300 | 6,340 | Wheels | |
| | 4x4 | 5,600 | 6,340 | | |
| F-350 SRW | 4x2 | 5,300 | 6,780 | Number of studs – 8 (F-250/F-350); 10 (F-450) | |
| | 4x4 | 5,600 | 7,230 | | |
| F-350 DRW | 4x2 | 5,300 | 10,300 | Bolt-circle diameter – 6.69" (170-mm) SRW; 7.87" (200-mm) F-350 DRW; 8.86" (225-mm) F-450 | |
| | 4x4 | 5,600 | 9,900 | | |
| F-450 DRW | 4x2 | 5,600 | 9,900 | | |
| | 4x4 | 5,600 | 9,900 | | |

SRW = Single Rear Wheel DRW = Dual Rear Wheel

| Cargo Box (in.) | 6.75' Box | 8' Box |
|---------------------|-----------|--------|
| Volume (cu. ft.) | 65.4 | 78.5 |
| Inside height | 21.1 | 21.1 |
| Length at floor | 81.9 | 98.1 |
| Width at wheelhouse | 50.5 | 50.5 |
| Max. width at floor | 66.9 | 66.9 |

| Interior (in.) | Regular Cab | SuperCab | Crew Cab |
|---|-------------|----------|----------|
| Front | | | |
| Head room | 40.8 | 40.8 | 40.8 |
| Leg room (max.) | 43.9 | 43.9 | 43.9 |
| Hip room | 62.5 | 62.5 | 62.5 |
| Shoulder room | 66.7 | 66.7 | 66.7 |
| Rear | | | |
| Head room | | 40.3 | 40.4 |
| Leg room | | 33.5 | 43.6 |
| Hip room | | 64.7 | 64.7 |
| Shoulder room | | 65.8 | 65.9 |
| Total passenger volume (cu. ft.) | 64.6 | 116.0 | 131.8 |
| Cargo volume behind front row (cu. ft.) | 11.6 | 31.6 | 52.1 |

ALTERNATORS

| Engine | Trim | Standard | Available |
|-------------|---------------------------------------|----------|-------------------------------|
| 6.2L Gas | XL | 157-amp | 200-amp 240-amp |
| | XLT, LARIAT, KING RANCH, PLATINUM | 200-amp | 240-amp |
| 7.3L Gas | XL, XLT, LARIAT, KING RANCH, PLATINUM | 240-amp | 397-amp |
| 6.7L Diesel | XL | 175-amp | 240-amp 322-amp 397-amp |
| | XLT, LARIAT, KING RANCH, PLATINUM | 240-amp | 332-amp 397-amp |
| | LIMITED | 332-amp | 397-amp |

| | | | | Regular Cab | | | SuperCab™ | | | Crew Cab | | |
|---------------|-------------|------------|---------|-----------------|---------------------|---------------------|-----------------|---------------------|---------------------|-----------------|---------------------|---------------------|
| | Engine | Axle Ratio | GCWR | Conventional | | | Conventional | | | Conventional | | |
| | | | | Weight Carrying | Weight Distribution | 5th-Wheel/Gooseneck | Weight Carrying | Weight Distribution | 5th-Wheel/Gooseneck | Weight Carrying | Weight Distribution | 5th-Wheel/Gooseneck |
| F-250 SRW 4x2 | 6.2L Gas | 3.73 | 19,500 | 13,000 | 13,300 | 13,300 | 13,000 | 13,000 | 13,000 | 12,900 | 12,900 | 12,900 |
| | | 4.30 | 22,000 | 13,000 | 14,000 | 15,800 | 14,000 | 15,000 | 15,500 | 15,000 | 15,000 | 15,400 |
| | 7.3L Gas | 3.55 | 21,800 | 13,000 | 14,000 | 15,400 | 14,000 | 15,000 | 15,200 | 14,900 | 15,000 | 15,100 |
| | | 4.30 | 26,000 | 13,000 | 14,000 | 19,500 | 14,000 | 15,000 | 19,300 | 15,000 | 15,000 | 19,200 |
| | 6.7L Diesel | 3.31 | 23,500 | 14,000 | 15,000 | 16,400 | 15,000 | 15,000 | 16,200 | 15,000 | 15,000 | 16,100 |
| | | | 30,000¹ | 14,000¹ | 15,200¹ | 22,800¹.² | 15,200¹ | 15,200¹ | 22,000¹.² | 18,200¹ | 18,200¹ | 21,700¹.² |
| | | 3.55 | 23,500 | 14,000 | 15,000 | 16,400 | 15,000 | 15,000 | 16,200 | 15,000 | 15,000 | 16,100 |
| | | | 30,000¹ | 14,000¹ | 15,200¹ | 22,800¹.² | 15,200¹ | 15,200¹ | 22,000¹.² | 18,200¹ | 18,200¹ | 21,700¹.² |
| F-250 SRW 4x4 | 6.2L Gas | 3.73 | 19,500 | 12,900 | 12,900 | 12,800 | 12,600 | 12,600 | 12,600 | 12,500 | 12,500 | 12,500 |
| | | 4.30 | 22,000 | 14,000 | 15,000 | 15,300 | 15,000 | 15,000 | 15,100 | 15,000 | 15,000 | 15,000 |
| | 7.3L Gas | 3.55 | 21,800 | 14,000 | 15,000 | 15,000 | 14,700 | 14,800 | 14,700 | 14,700 | 14,700 | 14,700 |
| | | 4.30 | 24,900³ | | | | | | | 15,000³ | 15,000³ | 17,200³ |
| | 6.7L Diesel | 3.31 | 26,000 | 14,000 | 15,000 | 19,100 | 15,000 | 15,000 | 18,800 | 15,000 | 15,000 | 18,600 |
| | | | 23,500 | 14,000 | 15,000 | 16,000 | 15,000 | 15,000 | 15,500 | 15,000 | 15,000 | 14,700 |
| | | 3.55 | 30,000¹ | 14,000¹ | 15,000¹ | 21,800¹.² | 20,000¹ | 20,000¹ | 20,100¹.² | 20,000¹ | 20,000¹ | 19,100¹.² |
| | | | 23,500 | 14,000 | 15,000 | 16,000 | 15,000 | 15,000 | 15,800 | 15,000 | 15,000 | 15,700 |
| | | | 30,000¹ | 14,000¹ | 15,000¹ | 21,800¹.² | 20,000¹ | 20,000¹ | 20,100¹.² | 20,000¹ | 20,000¹ | 19,100¹.² |
| | | | | | | | | | | | | |
| F-350 SRW 4x2 | 6.2L Gas | 3.73 | 19,500 | 13,000 | 13,200 | 13,100 | 12,800 | 12,800 | 12,800 | 12,700 | 12,700 | 12,600 |
| | | 4.30 | 23,000 | 13,000 | 14,000 | 16,600 | 15,000 | 15,000 | 16,300 | 15,000 | 15,000 | 16,100 |
| | 7.3L Gas | 3.73 | 23,500 | 13,000 | 14,000 | 17,000 | 15,000 | 15,000 | 16,800 | 15,000 | 15,000 | 16,600 |
| | | 4.30 | 27,500 | 13,000 | 14,000 | 21,000² | 15,000 | 15,000 | 20,800² | 15,000 | 15,000 | 20,600² |
| | 6.7L Diesel | 3.31/3.55 | 30,000 | 14,000 | 15,000 | 22,800² | 15,000 | 15,000 | 22,600² | 18,200 | 18,200 | 22,400² |
| | | | | | | | | | | | | |
| F-350 SRW 4x4 | 6.2L Gas | 3.73 | 19,500 | 12,700 | 12,700 | 12,600 | 12,400 | 12,400 | 12,400 | 12,300 | 12,300 | 12,200 |
| | | 4.30 | 23,000 | 14,000 | 15,000 | 16,100 | 15,000 | 15,000 | 15,900 | 15,000 | 15,000 | 15,700 |
| | 7.3L Gas | 3.73 | 23,500 | 14,000 | 15,000 | 16,600 | 15,000 | 15,000 | 16,300 | 15,000 | 15,000 | 16,200 |
| | | 4.30 | 27,500 | 14,000 | 15,000 | 20,600² | 15,000 | 15,000 | 20,300² | 15,000 | 15,000 | 20,200² |
| | 6.7L Diesel | 3.31/3.55 | 30,000 | 14,000 | 15,000 | 22,400² | 20,000 | 20,000 | 22,200² | 20,000 | 20,000 | 21,900² |
| | | | | | | | | | | | | |

| | | | | Regular Cab | | | SuperCab | | | Crew Cab | | |
|---------------|-------------|-------------|---------------|-----------------|---------------------|---------------------|-----------------|---------------------|---------------------|-----------------|---------------------|---------------------|
| | Engine | Axle Ratio | GCWR | Conventional | | | Conventional | | | Conventional | | |
| | | | | Weight Carrying | Weight Distribution | 5th-Wheel/Gooseneck | Weight Carrying | Weight Distribution | 5th-Wheel/Gooseneck | Weight Carrying | Weight Distribution | 5th-Wheel/Gooseneck |
| F-350 DRW 4x2 | 6.2L Gas | 3.73 | 20,000 | 13,200 | 13,200 | 13,200 | 12,700 | 12,700 | 12,700 | 12,500 | 12,500 | 12,500 |
| | | 4.30 | 23,500 | 16,700 | 16,700 | 16,700 | 16,200 | 16,200 | 16,200 | 16,000 | 16,000 | 16,000 |
| | 7.3L Gas | 3.73 | 24,000 | 17,000 | 17,200 | 17,200 | 16,700 | 16,700 | 16,700 | 16,500 | 16,500 | 16,500 |
| | | 4.30 | 28,000 | 17,000 | 21,000 | 21,200 | 18,000 | 20,700 | 20,700 | 19,000 | 20,500 | 20,500 |
| | 6.7L Diesel | 3.55 | 40,000 | 18,000 | 21,000 | 32,400 | 18,000 | 21,200 | 32,000 | 19,000 | 21,200 | 31,800 |
| | | 4.10 | 43,400 | 18,000 | 21,000 | 35,750⁴ | 18,000 | 21,200 | 35,400⁴ | 19,000 | 21,200 | 35,200⁴ |
| F-350 DRW 4x4 | 6.2L Gas | 3.73 | 20,000 | 12,800 | 12,800 | 12,700 | 12,300 | 12,300 | 12,300 | 12,100 | 12,100 | 12,000 |
| | | 4.30 | 23,500 | 16,300 | 16,300 | 16,200 | 15,800 | 15,800 | 15,800 | 15,600 | 15,600 | 15,500 |
| | 7.3L Gas | 3.73 | 24,000 | 16,800 | 16,800 | 16,700 | 16,300 | 16,300 | 16,300 | 16,100 | 16,100 | 16,000 |
| | | 4.30 | 28,000 | 18,000 | 20,000 | 20,700 | 18,000 | 20,000 | 20,300 | 19,000 | 20,100 | 20,000 |
| | | 6.7L Diesel | 3.55 | 40,000 | 18,000 | 32,000 | 19,000 | 21,200 | 31,600 | 21,200 | 21,200 | 31,300 |
| F-450 DRW 4x2 | 6.7L Diesel | 4.30 | 43,500 | | | | | | | 24,200⁵ | 24,200⁵ | 34,600⁴ |
| | | | 45,300 | 21,200⁶ | 21,200⁶ | 37,000⁴ | | | | | | |
| F-450 DRW 4x4 | 6.7L Diesel | 4.30 | 43,500 | | | | | | | 24,200⁵ | 24,200⁵ | 32,600⁴ |
| | | | 45,300 | 21,200⁶ | 21,200⁶ | 36,400⁴ | | | | | | |

All best-in-class configurations shown **bolded** and in color. Class is Full-Size Pickups over 8,500 lbs. GVWR.

SRW = Single Rear Wheel DRW = Dual Rear Wheel GCWR = Gross Combined Weight Rating

Towing Notes: Trailer tongue (trailer king pin for 5th-wheel towing) load weight should be 10% (15% for 5th-wheel towing) of total loaded trailer weight. Make sure vehicle payload (reduced by option weight) will accommodate trailer tongue (trailer king pin for 5th-wheel towing) load weight and weight of passengers and cargo added to towing vehicle. Addition of trailer tongue (trailer king pin for 5th-wheel towing) load weight and weight of passengers and cargo must not cause vehicle weights to exceed rear GAWR or GVWR. These ratings can be found on the vehicle Safety Compliance Certification Label.

1. Requires available F-250 High-Capacity Trailer Tow Package. **2.** Gooseneck tow rating shown. 5th-wheel tow rating limited to 5th-wheel hitch rating of 19,000 lbs. **3.** Requires TREMOR™ Off-Road Package. **4.** Gooseneck tow rating shown. 5th-wheel tow rating limited to 5th-wheel hitch rating of 32,500 lbs. **5.** 50% Weight Distribution setup required. **6.** 25% Weight Distribution setup required.

| PAYLOAD | GVWR & Maximum Payload Weight Ratings (lbs.) |
|---------|--|
| | |

| | | Regular Cab | SuperCab™ | | Crew Cab | |
|---------------|---------------------|--------------------|--------------------|--------------------|--------------------|--------------------|
| | GVWR | 141.6" WB | 148.0" WB | 164.2" WB | 159.8" WB | 176.0" WB |
| F-250 SRW 4x2 | 9,900 | 4,160 | 3,880 | 3,770 | 3,780 | 3,550 |
| | 10,000 | 4,260 | 3,980 | 3,870 | 3,880 | 3,650 |
| | 10,400 | 3,850 | 3,580 | 3,440 | 3,460 | 3,230 |
| | 10,600 ¹ | 3,940 ¹ | | | | |
| | 10,700 ¹ | | 3,770 ¹ | | | |
| | 10,800 ¹ | | | 3,740 ¹ | 3,750 ¹ | 3,520 ¹ |
| F-250 SRW 4x4 | 9,900 | 3,720 | 3,450 | 3,360 | 3,370 | 3,110 |
| | 10,000 | 3,820 | 3,550 | 3,460 | 3,470 | 3,210 |
| | 10,400 | 3,430 | 3,170 | 3,050 | 3,060 | 2,780 |
| | 10,800 ¹ | 3,270 ¹ | 3,460 ¹ | 3,310 ¹ | 3,320 ¹ | 3,040 ¹ |
| F-350 SRW 4x2 | 10,000 | 4,060 | 3,810 | 3,690 | 3,650 | 3,420 |
| | 10,100 | 4,160 | 3,910 | | | |
| | 10,200 | | | | 3,850 | |
| | 10,400 | | | 4,090 | | |
| | 10,500 | 4,500 | | | | |
| | 10,600 | 3,930 | 4,350 | | | 4,020 |

Payload Notes: Maximum payload capabilities are for properly equipped base vehicles with required equipment and a 150-lb. driver and vary based on cargo, vehicle configuration, accessories and number of passengers. See label on door jamb for carrying capacity of a specific vehicle. For additional information, see your Ford Dealer.

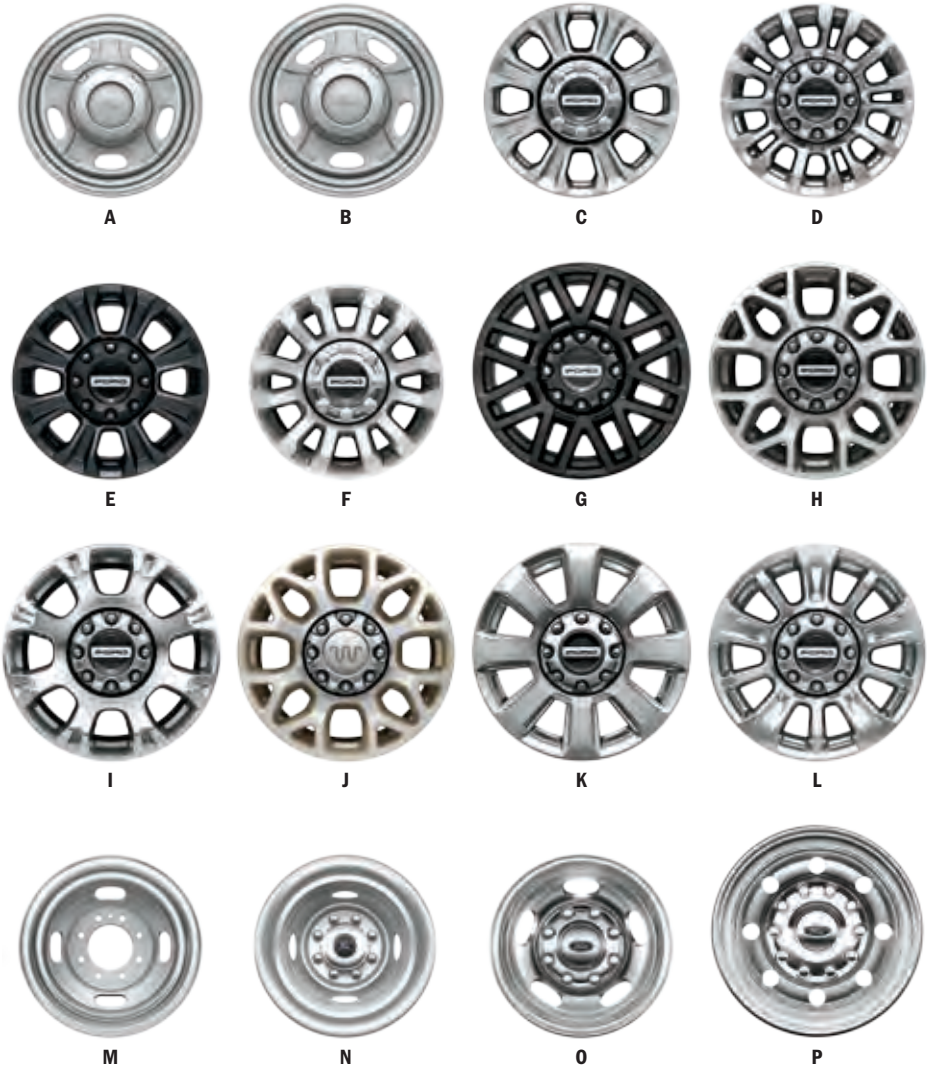
REAR AXLES

| Engine | Configuration | Standard | Available |
|-------------|-----------------|-------------------------|---|
| 6.2L Gas | F-250/F-350 SRW | 3.73 non-limited-slip | 3.73 electronic-locking 4.30 electronic-locking |
| | F-350 DRW | 3.73 limited-slip | 4.30 limited-slip |
| 7.3L Gas | F-250 SRW | 3.55 non-limited-slip | 3.55 electronic-locking 4.30 electronic-locking |
| | F-350 SRW | 3.73 electronic-locking | 4.30 electronic-locking ^a |
| | F-350 DRW | 3.73 limited-slip | 4.30 limited-slip |
| 6.7L Diesel | F-250/F-350 SRW | 3.31 non-limited-slip | 3.55 non-limited-slip ^a 3.31 electronic-locking 3.55 electronic-locking ^a |
| | | | |
| | F-350 DRW | 3.55 non-limited-slip | 3.55 limited-slip 4.10 limited-slip |
| | F-450 DRW | 4.30 limited-slip | |

| | | Regular Cab | SuperCab | | Crew Cab | |
|---------------|--------|-------------|-----------|-----------|-----------|-----------|
| | GVWR | 141.6" WB | 148.0" WB | 164.2" WB | 159.8" WB | 176.0" WB |
| F-350 SRW 4x2 | 10,700 | | 3,800 | | 4,290 | |
| | 10,800 | | | | 3,720 | |
| | 10,900 | | | 4,540 | | |
| | 11,000 | | | 3,980 | | |
| | 11,100 | 4,380 | | | | 4,460 |
| | 11,200 | | 4,250 | | | |
| | 11,300 | | | | 4,160 | |
| | 11,400 | | | 4,320 | | 4,020 |
| | 11,500 | | | 4,420 | | 4,120 |
| F-350 SRW 4x4 | 10,000 | 3,630 | 3,370 | 3,260 | 3,220 | 2,990 |
| | 10,400 | 4,030 | | | | |
| | 10,500 | | 3,870 | | | |
| | 10,600 | | | | 3,820 | |
| | 10,800 | | | 4,060 | | |
| | 10,900 | 4,470 | | | | 3,890 |
| | 11,000 | 3,910 | 4,320 | | | |

| | | Regular Cab | SuperCab | | Crew Cab | |
|------------------|--------|--------------------------|-----------|-----------|-----------|-----------|
| | GVWR | 141.6" WB | 148.0" WB | 164.2" WB | 159.8" WB | 176.0" WB |
| F-350 SRW 4x4 | 11,100 | | | | 4,260 | |
| | 11,200 | | | | 3,700 | |
| | 11,300 | | 4,610 | 4,500 | 4,460 | 4,230 |
| | 11,400 | 4,960 | 4,020 | 4,600 | 3,840 | 4,320 |
| | 11,500 | 4,350 | 4,120 | 4,700 | 3,940 | 4,420 |
| | 11,800 | | | 4,970 | | |
| | 11,900 | | | | | 4,790 |
| | 12,000 | | | | | 4,240 |
| | 12,400 | | | | | 4,630 |
| F-350 DRW 4x2 | 13,000 | 6,660 | | 6,190 | | 5,960 |
| | 14,000 | 7,850² | | 7,190 | | 6,960 |
| F-350 DRW 4x4 | 13,000 | 6,210 | | 5,770 | | 5,530 |
| | 14,000 | 7,210 | | 6,770 | | 6,530 |
| F-450 DRW 4x2 | 14,000 | 6,210 | | | | 5,630 |
| F-450 DRW 4x4 | 14,000 | 5,900 | | | | 5,320 |

WHEELS



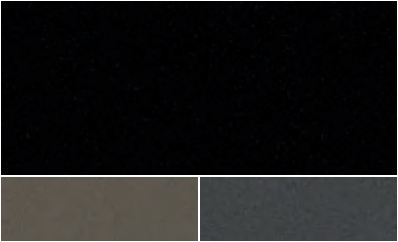
| XL | XLT | LARIAT™ | KING RANCH® | PLATINUM® | LIMITED | |
|----|-----|---------|-------------|-----------|---------|--|
| | | | | | | F-250/F-350 SRW WHEELS/TIRES |
| S | | | | | | A. 17" Argent-Painted Steel with Painted Center Cap |
| O | | | | | | B. 18" Argent-Painted Steel with Painted Center Cap (F-350) |
| P | S | | | | | C. 18" Cast-Aluminum with Bright Center Cap (included in STX® Package) |
| | P | P | | | | D. 18" Chrome-Like PVD Aluminum with Bright Center Cap (included in XLT Premium and Chrome Packages) |
| | | P | P | P | | E. 18" Low-Gloss Black-Painted Aluminum with Black Center Cap (included in TREMOR™ Off-Road Package) |
| | | S | | | | F. 18" Bright-Machined Cast-Aluminum with Bright Center Cap |
| | P | P | | | | G. 20" High-Gloss Black Premium Painted Aluminum with Black Center Cap (included in Black Appearance Package) |
| | | O | | | | H. 20" Cast-Aluminum with Bright Center Ornament (4x4) |
| | | O | P | | | I. 20" Chrome-Like PVD Aluminum with Bright Center Cap ³ (requires 4x4 and Chrome Package on LARIAT; included in KING RANCH Chrome Package with KING RANCH Center Cap) |
| | | | S | | | J. 20" Bright-Machined Cast-Aluminum with KING RANCH Center Cap |
| | | | | S | | K. 20" Polished Aluminum with Bright Center Cap |
| | | | | S | | L. 20" Polished Aluminum with Bright Center Cap |
| S | | | | | | LT245/75R17E BSW all-season tires |
| O | | | | | | LT245/75R17E BSW all-terrain tires |
| O | | | | | | LT265/70R17E OWL all-terrain tires |
| O | S | S | | | | LT275/65R18E BSW all-season tires ³ |
| O | O | O | | | | LT275/70R18E BSW all-terrain tires ³ (4x4) |
| O | O | O | | | | LT275/70R18E OWL all-terrain tires ³ (4x4) (XL requires STX Package) |
| | P | O | S | S | S | LT275/65R20E OWL all-terrain tires (4x4) (included in Black Appearance Package) |
| | | P | P | P | | LT285/75R18E BSW 35" off-road tires (included in TREMOR Off-Road Package) |
| | | | | | | F-350 DRW WHEELS/TIRES |
| S | S | | | | | M. 17" Argent-Painted Steel without Center Cap |
| O | O | | | | | N. 17" Stainless Steel Covers, Front and Rear ³ (requires steel wheels) |
| O | O | S | S | S | S | O. 17" Polished Forged-Aluminum ⁴ with Bright Center Cap (includes KING RANCH Center Cap on KING RANCH) |
| S | S | S | S | S | S | LT245/75R17E BSW all-season tires |
| O | O | O | O | O | O | LT245/75R17E BSW all-terrain tires |
| | | O | O | O | O | LT245/75R17E OWL all-terrain tires (BSW rear inner tires) |
| | | | | | | F-450 DRW WHEELS/TIRES |
| S | S | S | S | S | S | P. 19.5" Polished Forged-Aluminum ⁴ with Bright Center Cap (includes KING RANCH Center Cap on KING RANCH) |
| S | S | S | S | S | S | 225/70R19.5G BSW traction tires |

All best-in-class configurations shown **bolded** and in color. Class is Full-Size Pickups over 8,500 lbs. GVWR.

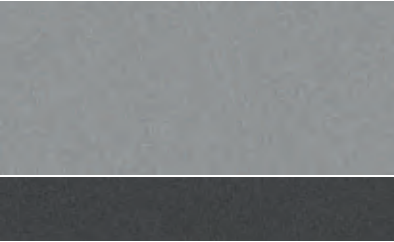
SRW = Single Rear Wheel DRW = Dual Rear Wheel WB = Wheelbase GVWR = Gross Vehicle Weight Rating Horsepower, torque and payload are independent attributes and may not be achieved simultaneously.

1. Requires available F-250 High-Capacity Trailer Tow Package. **2.** Requires available F-350 Gas Heavy-Duty Payload Package. **3.** Restrictions may apply. See your dealer for details. **4.** Inner rear wheels are steel.

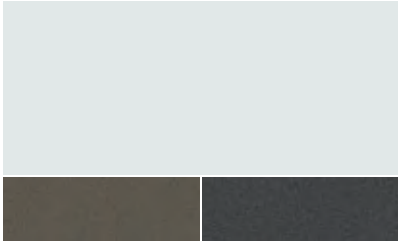
EXTERIOR & INTERIOR



Agate Black Metallic
Stone Gray Two-Tone Carbonized Gray Two-Tone



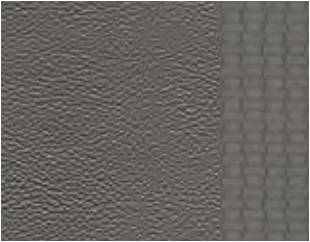
Iconic Silver Metallic
Carbonized Gray Two-Tone



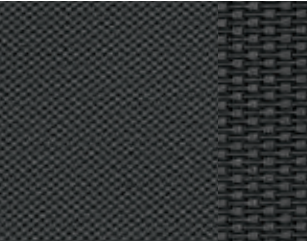
Oxford White
Stone Gray Two-Tone Carbonized Gray Two-Tone



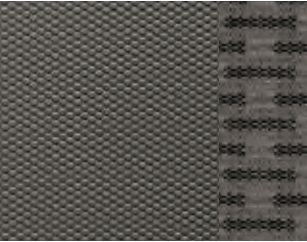
Carbonized Gray Metallic



1 Medium Earth Gray Vinyl
XL STX



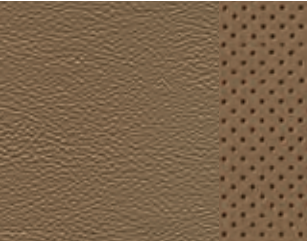
2 Dark Earth Gray Cloth
XL STX



3 Medium Earth Gray Cloth
XLT



4 Black Vinyl Bolster/Leather Insert
LARIAT



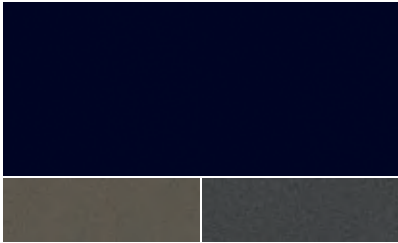
5 Baja Vinyl Bolster/Leather Insert
LARIAT



Race Red



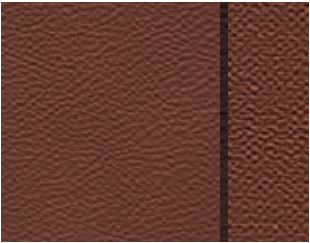
Stone Gray Metallic



Antimatter Blue Metallic
Stone Gray Two-Tone Carbonized Gray Two-Tone



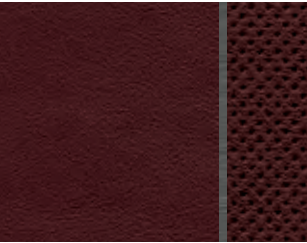
Atlas Blue Metallic
Carbonized Gray Two-Tone



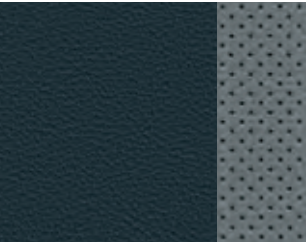
6 Kingsville KING RANCH Leather/
Tuxedo Stripes
KING RANCH



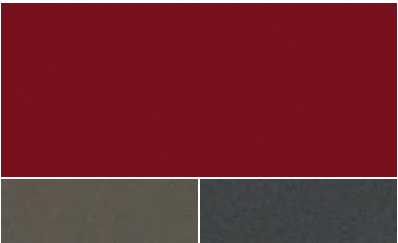
7 Black Luxury Leather/Silver Smoke
Vinyl Tuxedo Stripes
PLATINUM



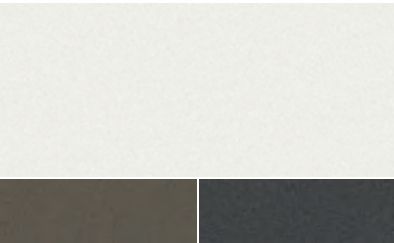
8 Dark Marsala Luxury Leather/Silver
Smoke Vinyl Tuxedo Stripes
PLATINUM



9 Admiral Blue/Light Slate
Venetian Leather
LIMITED



Rapid Red Metallic Tinted Clearcoat¹
Stone Gray Two-Tone Carbonized Gray Two-Tone



Star White Metallic Tri-coat¹
Stone Gray Two-Tone Carbonized Gray Two-Tone

Colors are representative only. See your dealer for actual paint/trim options.

1. Additional charge. **2.** Stone Gray and Carbonized Gray Two-Tone are optional on LARIAT. **3.** Stone Gray Two-Tone is standard on KING RANCH.

| | XL | STX® | XLT | XLT BLACK APPEARANCE | LARIAT™² | LARIAT BLACK APPEARANCE | KING RANCH®³ | KING RANCH MONOCHROMATIC | PLATINUM® | LIMITED |
|--------------------------------------|-----|------|-----|-------------------------|----------|----------------------------|--------------|-----------------------------|-----------|---------|
| Agate Black Metallic | 1 2 | 1 2 | 3 | 3 | 4 5 | 4 | 6 | 6 | 7 8 | 9 |
| Iconic Silver Metallic | 1 2 | 1 2 | 3 | | 4 5 | 4 | | | 7 8 | 9 |
| Oxford White | 1 2 | 1 2 | 3 | 3 | 4 5 | | 6 | 6 | | |
| Carbonized Gray Metallic | 1 2 | 1 2 | 3 | 3 | 4 | 4 | | | 7 8 | 9 |
| Race Red | 1 2 | 1 2 | 3 | 3 | 4 5 | | | | | |
| Stone Gray Metallic | 1 2 | 1 2 | 3 | | 4 5 | | | 6 | | 9 |
| Antimatter Blue Metallic | 1 2 | 1 2 | 3 | | 4 5 | 4 | 6 | 6 | 7 8 | |
| Atlas Blue Metallic | 1 2 | 1 2 | 3 | | 4 5 | 4 | | | 7 8 | 9 |
| Rapid Red Metallic Tinted Clearcoat¹ | | | 3 | | 4 5 | 4 | 6 | 6 | 7 | 9 |
| Star White Metallic Tri-Coat¹ | | | | | 4 5 | 4 | 6 | 6 | 7 8 | 9 |



F-250 XLT with available XLT Value Package in Oxford White accessorized with 5" black step bars, hood deflector, side window deflectors¹, hard-folding tonneau cover¹, heavy-duty splash guards, chrome front tow hooks, LED fog lamps¹, and rear wheel-well liners



- | | |
|---|---|
| A. Stowable loading ramps | B. Floor liners |
| C. 5th-wheel hitch kits | D. Dash cam systems ¹ |
| E. Sports/ladder rack ¹ | F. In-vehicle safe ¹ |
| G. 360-Degree Dual Beacon LED warning strobes ^{1,2} | H. Bed tray |

SHOP THE COMPLETE COLLECTION | accessories.ford.com

Ford Credit® Get the ride you want. Whether you plan to lease or buy, Ford Credit has the option that's right for you. Ask your Ford Dealer for details or visit us online at ford.com/finance.

Ford Insure. Insurance that lets you earn discounts for safe driving, offering a maximum discount of 40% off your auto insurance. Ford Insure works with your 2022 Super Duty® to gauge driving habits and calculate a discount based on how you drive. Visit fordinsure.com to learn more.

American Road Services Company LLC (a Ford affiliate) is the licensed insurance agency offering Ford Insure and is underwritten by Nationwide Mutual Insurance Company and affiliates. Home Office: Columbus, OH. Ford Motor and Ford Credit are not insurance companies or agents. Subject to underwriting guidelines, review and approval. Details and availability varies; program criteria differ in California. Discounts do not apply to all coverage elements; actual savings vary by state, coverage selections, rating factors and policy changes.

Ford Licensed Accessories (FLA) are warranted by the accessory manufacturer's warranty. FLA are designed and developed by the accessory manufacturer and have not been designed or tested to Ford Motor Company engineering requirements. Contact your Ford Dealer for details and/or a copy of all limited warranties.

Ford Original Accessories. They're warranted for whichever provides you the greatest benefit: 24 months/unlimited mileage, or the remainder of your Bumper-to-Bumper 3-year/36,000-mile (whichever comes first) New Vehicle Limited Warranty.

Ford Protect™ Extended Service Plans. Whether you purchase or lease your Ford vehicle, insist on genuine Ford Protect extended service plans. Ford Protect has a variety of plans to give you peace-of-mind protection whether you want vehicle component or maintenance coverage. Plus, they are fully backed by Ford and honored at all Ford dealerships in the U.S., Canada and Mexico. When you visit your dealer, insist on genuine Ford Protect extended service plans.

New Vehicle Limited Warranty. We want your Ford F-Series Super Duty pickup ownership experience to be the best it can be. Under this warranty, your new vehicle comes with 3-year/36,000-mile bumper-to-bumper coverage (whichever comes first), 5-year/60,000-mile Powertrain Warranty coverage (whichever comes first), 5-year/60,000-mile safety restraint coverage (whichever comes first), and 5-year/unlimited-mile corrosion perforation (aluminum panels do not require perforation) coverage (whichever comes first) – all with no deductible. The Ford 6.7L Power Stroke® diesel engine gets 5-year/100,000-mile warranty coverage (whichever comes first). Please ask your Ford Dealer for a copy of this limited warranty.

Roadside Assistance. Covers your vehicle for 5 years or 60,000 miles (whichever comes first), so you have the security of knowing that help may be only a phone call away should you run out of fuel, lock yourself out of the vehicle or need a winch back to a paved road, a battery jump start or towing. Your Ford Dealer can provide complete details on all of these advantages.

FORD TELEMATICS™ ESSENTIALS^{3,4} is our complimentary software solution that has an intuitive, easy-to-read dashboard providing valuable insights about your fleet vehicles. To take advantage of this complimentary offer, sign up today at fleetaccount.ford.com/customer-signup.

AVAILABLE FORD TELEMATICS Fleet Management Software^{4,5} lets you monitor where your vehicles go, how they're used, how well they're running and more. These insights can give you more time to focus on the rest of your business. Or use available Ford Data Services™^{4,5} to access data through your business system or other telematics service providers. We can help you get the data you need the way you prefer. Learn more at commercialsolutions.ford.com.

1. Ford Licensed Accessory. **2.** Check local laws for use. **3.** Available on Ford vehicles with embedded modem. Requires modem activation and agreement to digital terms and conditions. Complimentary access will exist for the life of the vehicle or the life of the product. **4.** Connected service and features, and access to vehicle data depend on subscription and compatible AT&T network availability. Evolving technology/cellular networks/vehicle capability may limit functionality and prevent operation of connected features. **5.** Available on vehicles with embedded modem or equipped with plug-in device (PID). Requires modem activation. Ford Telematics and Ford Data Services are subscription services subject to agreement to FSM terms and conditions. Subscription subject to monthly charge. Subject to OFAC and credit check for subscription eligibility.

Ford and Oval Device, 911 Assist, Active Motion, AdvanceTrac, AppLink, BLIS, BoxLink, Built Ford Proud, Built Ford Tough, F-Series, Ford Co-Pilot360, Ford Credit, Ford Data Services, Ford Protect, Ford Telematics, FordPass, FordPass. Built to Keep You Moving., FX4, Hill Descent Control, Intelligent Oil-Life Monitor, LARIAT, MyKey, PLATINUM, Power Stroke, PowerScope, Pro Trailer Backup Assist, Roll Stability Control, RSC, Safety Canopy, SecuriCode, SecuriLock, SelectShift, SOS Post-Crash Alert System, STX, Super Duty, SuperCab, SYNC, TorqShift, Tough Bed, Trail Control, TREMOR and related marks are trademarks of Ford Motor Company.

Apple CarPlay and iPhone are trademarks of Apple Inc., registered in the U.S. and other countries. BANG & OLUFSEN and B&O are registered trademarks of Bang & Olufsen Group. Licensed by Harman Becker Automotive Systems Manufacturing Kft. All rights reserved. Android Auto is a trademark of Google LLC. HD Radio is a proprietary trademark of iBiquity Digital Corporation. King Ranch is a registered trademark of King Ranch, Inc. Miko is a registered trademark of Miko s.r.l. SiriusXM and all related marks and logos are trademarks of Sirius XM Radio Inc. WARN is a registered trademark of WARN Industries. WEATHER GUARD is a registered trademark of WernerCo.

Comparisons based on competitive models (class is Full-Size Pickups over 8,500 lbs. GVWR), publicly available information and Ford certification data at time of release. Vehicles may be shown with optional and aftermarket upfit equipment. Features may be offered only in combination with other options or subject to additional ordering requirements/limitations. Dimensions and capacity ratings shown may vary due to optional features and/or production variability. Information is provided on an "as is" basis and could include technical, typographical or other errors. Ford makes no warranties, representations, or guarantees of any kind, express or implied, including but not limited to, accuracy, currency, or completeness, the operation of the information, materials, content, availability, and products. Ford reserves the right to change product specifications, pricing and equipment at any time without incurring obligations. Your Ford Dealer is the best source of the most up-to-date information on Ford vehicles. Body manufacturers are responsible for compliance certification of the completed vehicle. The Ford New Vehicle Limited Warranty and any government certification made by Ford shall cover only the vehicle as manufactured by Ford and shall not extend to any addition, modification or change of or to the vehicle by the Ford Authorized Pool Account.



From day one, we had the future in mind. And over 118 years later, we continue that tradition of innovation. Ford Co-Pilot360™ Technology is helping push us closer to autonomous driving. The latest generation of voice-activated SYNC® fosters untethered communication. And our fully electric vehicles – the all-new 2022 Ford F-150 Lightning® pickup and the Mustang Mach-E® SUV – are charging across America.

We've always had our mind on the future. Now we're building it.

22FSDPDF

© 2021 Ford Motor Company



FordPass. Built to Keep You Moving.™

Meet FordPass™ The app that lets you access complimentary remote features including start/stop and lock/unlock,¹ monitor your fuel level and oil life,² and puts Rewards, Roadside Assistance³ and more in the palm of your hand.



SCAN TO DOWNLOAD
or visit [FordPass.com](https://fordpass.com)
Data rates may apply.

1. Remote lock/unlock requires power door locks. **2.** FordPass Connect, the FordPass App, and complimentary Connected Service are required for remote features (see FordPass Terms for details). Connected service and features depend on compatible AT&T network availability. Evolving technology/cellular networks/vehicle capability may limit functionality and prevent operation of connected features. Connected service excludes Wi-Fi hotspot. **3.** Roadside Assistance is included for certain owners and available to everyone for a per-service fee. Ford reserves the right to change program details without obligations. Ford Roadside Assistance is a complimentary offering to all Ford owners for up to 5 years or 60,000 miles (from the date of sale), whichever comes first.

