



FORD  
2022 ECOSPORT<sup>®</sup>



## FLEXIBILITY BRINGS JOY TO YOUR DAY.

Flower day. Work day. Or weekend getaway. Whatever your adventure, the 2022 Ford EcoSport® SUV is ready to help you thrive. Pack in the essentials with plenty of cargo space.<sup>1</sup> Stay connected with the help of standard voice-activated SYNC®<sup>2</sup> technology. Invite your friends to enjoy the well-crafted interior with seating for up to 5 people. And dial up the fun with sporty style, plus the impressive performance of the 2.0L engine and Intelligent 4WD – now standard on every model. You've found the subcompact SUV that fits your big plans: Ford EcoSport.

S | SE | SES | TITANIUM

2.0L + Intelligent 4WD



SE. Luxe Yellow. Available equipment.

1. Cargo and load capacity limited by weight and weight distribution. 2. Don't drive while distracted or while using handheld devices. Use voice-operated systems when possible. Some features may be locked out while the vehicle is in gear. Not all features are compatible with all phones.

Vehicle imagery throughout this brochure may be computer-generated and may include available and aftermarket equipment.

**Important information regarding availability.** You may have heard the auto industry is experiencing a combination of high demand and global supply-chain constraints. This means our ability to build new vehicles with some features may not be available. We're doing everything we can to innovate our way through this and meet the demand for new Ford vehicles. We will continue to provide updates as we have them or you can contact your Ford Dealer for additional assistance.



## ALL ABOUT VERSATILITY.

The Ford EcoSport® SUV interior is built to help you make things happen. Behind the convenient rear swing gate, you'll discover 60/40 split rear seats that are easy to reconfigure when you have long items to carry. You'll also find over 25 storage pockets, bins and hooks throughout the interior – great for stowing your everyday essentials. There are 2 standard 12V powerpoints and 2 smart-charging USB ports to help keep your devices going. Plus, there's an available Interior Protection Package with a cargo mat and front and rear floor liners that makes it easy to refresh your EcoSport after a day's adventures.



Foldable flexibility that fits your lifestyle<sup>1</sup>  
Front seat belts not shown in order to provide a clear view of the vehicle interior.



Available Cargo Management System<sup>1</sup>



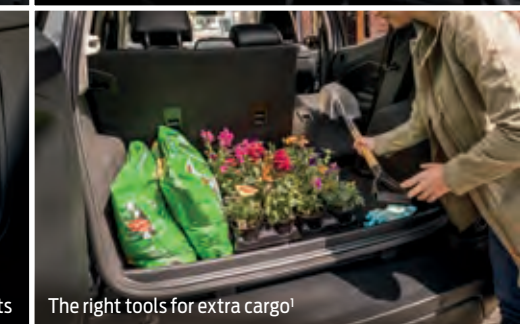
Plenty of cargo space<sup>1</sup>



110V/150W AC outlet



Smart-charging USB ports



The right tools for extra cargo<sup>1</sup>

**SES.** Diamond White. Available equipment.

**1.** Cargo and load capacity limited by weight and weight distribution.



# 4-WHEEL DRIVE.

FUN IN ANY SEASON.

Every Ford EcoSport® model in the 2022 lineup is powered by the 2.0L direct-injection engine paired with Intelligent 4WD. Auto Start-Stop Technology shuts off the engine when you come to a complete stop, and seamlessly restarts it when you release the brake pedal to help reduce fuel consumption and emissions during stop-and-go city driving. The 6-speed SelectShift® automatic transmission allows you to shift gears for a more engaging drive. Drive confidently year-round in your EcoSport 4WD.

## ELECTRIC POWER-ASSISTED STEERING

Standard on all models. Brings finesse to fun by providing a gentle steering assist when parking – and gives you more confident control at higher speeds.

## SPORT-TUNED SUSPENSION

Standard on SES models. Become one with the road. You'll be ready to take on the twists and turns thanks to precise handling and a fine-tuned suspension.

## ADVANCETRAC™ WITH ROLL STABILITY CONTROL™<sup>1</sup>

Standard on all models. Corners with confidence. Helps keep all 4 wheels firmly on the ground by selectively applying individual brakes and modifying engine power.

## 2.0L Ti-VCT I-4

**166** MAX. HP<sup>2</sup>

**149** LB.-FT. MAX. TORQUE<sup>2</sup>

## INTELLIGENT 4WD

Reads and reacts to the road 20 times faster than the blink of an eye. Translation: Capability is yours in just about any condition.

*Both standard on every 2022 Ford EcoSport*

**TITANIUM.** Ruby Red Metallic Tinted Clearcoat.<sup>3</sup> Available equipment.

<sup>1</sup>. Remember that even advanced technology cannot overcome the laws of physics. It's always possible to lose control of a vehicle due to inappropriate driver input for the conditions. <sup>2</sup>. Horsepower and torque ratings based on premium fuel per SAE J1349® standard. Your results may vary. Horsepower and torque are independent attributes and may not be achieved simultaneously. <sup>3</sup>. Additional charge.







## AMENITIES

EVERYWHERE YOU GO.

The Ford EcoSport® SUV interior offers features that help make each journey as good as the destination. Run your fingers along the available heated, leather-wrapped steering wheel as you settle into the available heated, 6-way power driver's seat. Indulge your passengers with comfort as they enjoy the spacious rear row with available ActiveX™ Trimmed Seats designed for your active lifestyle. Set the mood with available ambient lighting, while your audio favorites stream through the available 10-speaker B&O® Sound System. And let the sun shine in with the available power moonroof. It's all about doing your thing – in comfort and style.



**TITANIUM.** Ebony Black ActiveX Trimmed Seats. Available equipment.





# CONNECTED

## TO YOUR LIFE AND YOUR TECH.

Staying in touch on the go is easy in the Ford EcoSport® SUV. Voice-activated SYNC®<sup>1</sup> puts just what you need on the tip of your tongue – or right at your fingertips. SYNC AppLink®<sup>2</sup> lets you use voice commands to control favorite apps on your paired smartphone or other mobile devices. Available SYNC 3 even lets you use Siri® voice recognition software, Google Assistant™ virtual personal assistant, or the Ford+Alexa™ App<sup>3</sup> to stay connected while keeping your eyes on the road – and hands on the wheel.

Complimentary remote features like start/stop, lock/unlock, schedule a start, locate your vehicle, and vehicle status checks are easy to access through the FordPass™ App<sup>4</sup> with standard FordPass Connect<sup>5</sup>. Plus, connect up to 10 devices at once – inside or up to 50' away – using FordPass Connect<sup>5</sup> with 4G LTE Wi-Fi hotspot capability.<sup>6</sup>

### SYNC

*Standard on S*

- 4.2" LCD screen
- SYNC AppLink
- 2 smart-charging USB ports

### SYNC 3

*Standard on SE, SES and Titanium*

- 8" LCD touchscreen
- SYNC AppLink
- Apple CarPlay® compatibility<sup>7</sup>
- Android Auto™ compatibility<sup>7</sup>

- SiriusXM® with 3-month Platinum Plan trial subscription<sup>8</sup>
- 2 smart-charging USB ports
- Available Voice-Activated Touchscreen Navigation System with SiriusXM Traffic and Travel Link®<sup>8,9</sup>



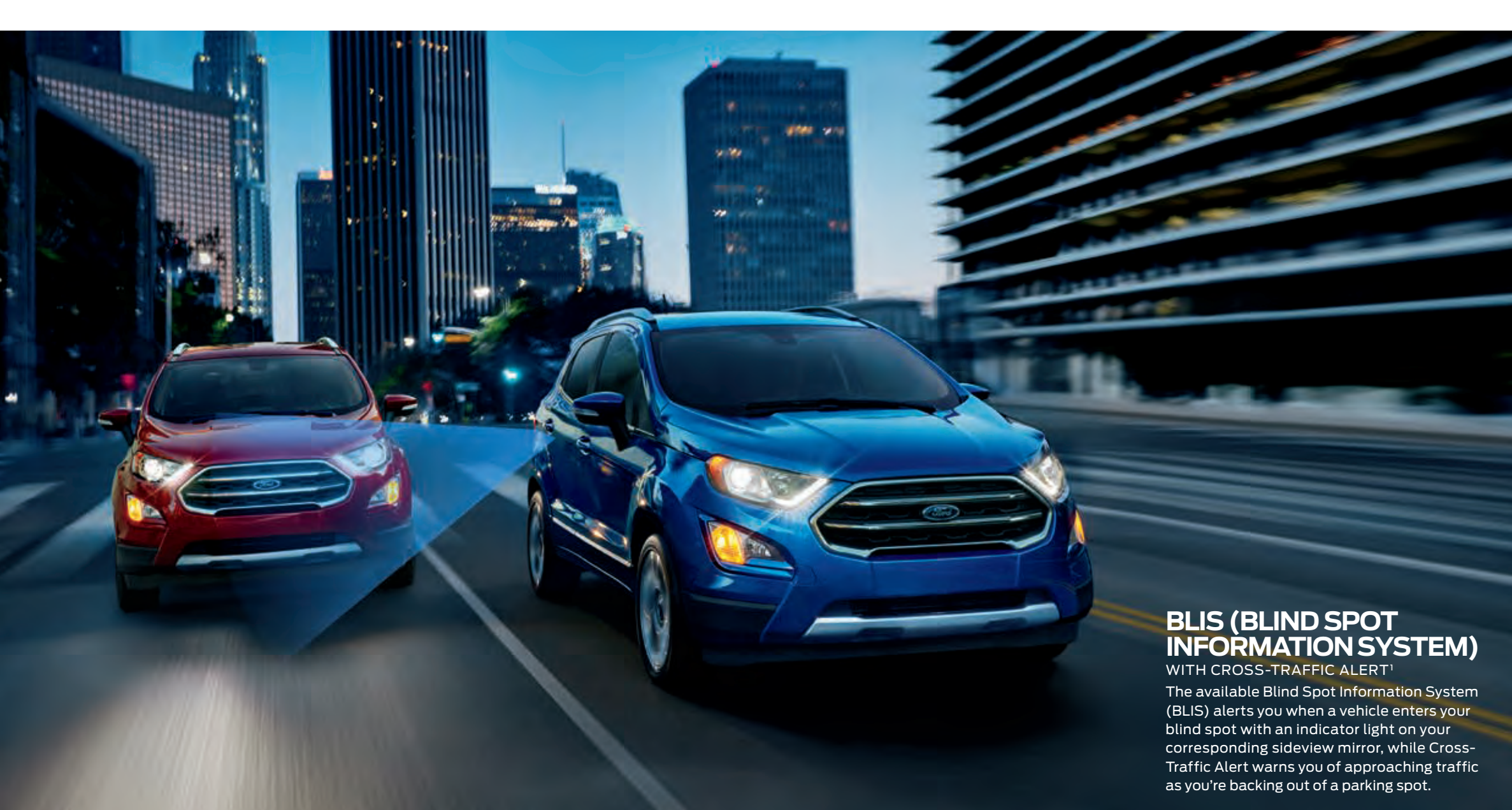
SCAN TO LEARN MORE  
or visit [Ford.com/SYNC](http://Ford.com/SYNC)  
Data rates may apply.

**TITANIUM.** Ebony Black ActiveX™ Trimmed Seats. Available equipment.

**1.** Don't drive while distracted or while using handheld devices. Use voice-operated systems when possible. Some features may be locked out while the vehicle is in gear. Not all features are compatible with all phones. **2.** Commands may vary by phone and AppLink software. **3.** Requires available SYNC 3 AppLink. Don't drive while distracted or while using handheld devices. Use voice controls. Certain Alexa functionality is dependent on smart phone and home technology. **4.** The FordPass App, compatible with select smartphone platforms, is available via download. Message and data rates may apply. **5.** FordPass Connect, the FordPass App, and complimentary Connected Service are required for remote features (see FordPass Terms for details). Connected service and features depend on compatible AT&T network availability. Evolving technology/cellular networks/vehicle capability may limit functionality and prevent operation of connected features. Connected service excludes Wi-Fi hotspot. **6.** Wi-Fi hotspot includes complimentary wireless data trial that begins upon AT&T activation and expires at the end of 3 months or when 3GB of data is used, whichever comes first. To activate, go to [www.att.com/ford](http://www.att.com/ford). **7.** Requires phone with active data service and compatible software. SYNC 3 does not control 3rd-party products while in use. 3rd parties are solely responsible for their respective functionality. **8.** Trial length and service availability may vary by model, model year or trim. Radio features, content and display may vary by vehicle. Some features may not be available while driving. Your trial subscription will automatically stop at the end of your trial period. Subscriptions offered and sold separately by SiriusXM for continued use after trial. Services are subject to the SiriusXM Customer Agreement and Privacy Policy available at [siriusxm.com](http://siriusxm.com) which includes complete terms and how to cancel which includes online methods or calling 1-866-635-2349. All fees, content and features are subject to change. **9.** Availability varies by model. See Specifications in this brochure for details.







# MANEUVER WITH CONFIDENCE.

Backing up. Changing lanes. Holding your own on steep hills. Our well-rounded collection of standard and available Ford Co-Pilot360™ Technology features can help you with these everyday situations and so many more. These advanced driver-assist technologies are about supplementing your driving skills.<sup>1</sup> So you can feel confidently in command on the road.

## FORD CO-PILOT360™ TECHNOLOGY

### STANDARD FEATURES

- Autolamp  
(Automatic On/Off Headlamps)
- Hill Start Assist
- Rear View Camera

### AVAILABLE FEATURES

- BLIS® (Blind Spot Information System) with Cross-Traffic Alert  
*Standard on SES and Titanium;  
Available on SE*
- Rain-Sensing Windshield Wipers  
*Standard on SES and Titanium*
- Rear Parking Sensors  
*Standard on SE, SES and Titanium*

## BLIS (BLIND SPOT INFORMATION SYSTEM)

WITH CROSS-TRAFFIC ALERT<sup>1</sup>

The available Blind Spot Information System (BLIS) alerts you when a vehicle enters your blind spot with an indicator light on your corresponding sideview mirror, while Cross-Traffic Alert warns you of approaching traffic as you're backing out of a parking spot.



SCAN TO LEARN MORE  
or visit  
[Ford.com/Technology](https://ford.com/technology)  
*Data rates may apply.*

**TITANIUM.** Lightning Blue Metallic. Available equipment.

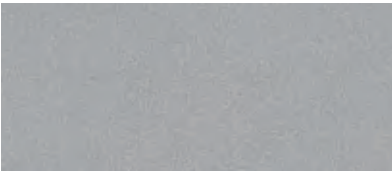
**1.** Driver-assist features are supplemental and do not replace the driver's attention, judgment and need to control the vehicle. It does not replace safe driving. See Owner's Manual for details and limitations.



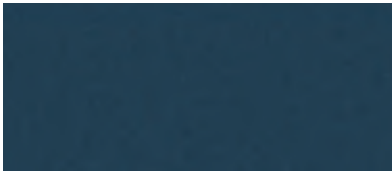
EXTERIOR



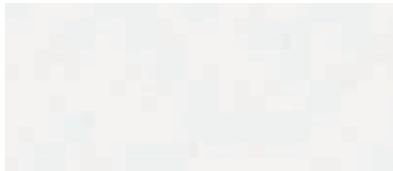
1 Lightning Blue Metallic



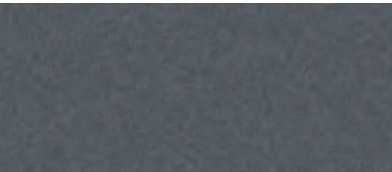
2 Moondust Silver Metallic



3 Blue Metallic



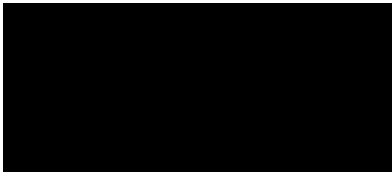
4 Diamond White



5 Smoke Metallic



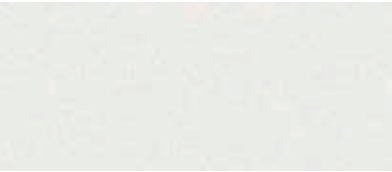
6 Race Red



7 Shadow Black



8 Ruby Red Metallic Tinted Clearcoat<sup>1</sup>



9 White Platinum Metallic Tri-coat<sup>1</sup>

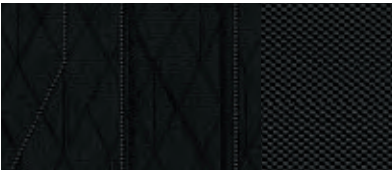


10 Luxe Yellow

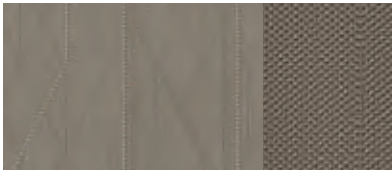
INTERIOR



Medium Stone Cloth / 1-7, 10  
**S**



Unique Ebony Black Cloth / 1-10  
**SE**



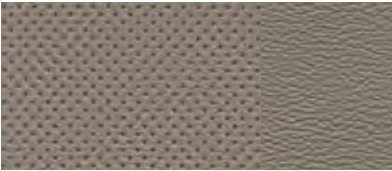
Unique Medium Stone Cloth / 1-10  
**SE**



Ebony Black Cloth with Orange Copper Accents / 1-10  
**SE Appearance Package**



Ebony Black ActiveX™ Seating Material  
with Gray Accents / 1-4, 10  
**SES**



Medium Light Stone ActiveX Seating Material / 1-10  
**Titanium**



Ebony Black ActiveX Seating Material / 1-10  
**Titanium**

Colors are representative only. See your dealer for actual paint/trim options. **1.** Additional charge.

WHEELS



16" Low-Gloss Magnetic-Painted  
Machined-Face Aluminum  
**S** Standard



16" Shadow Silver-Painted Aluminum  
**SE** Standard



17" Shadow Silver Aluminum  
**SE Appearance Package** Included



17" Black-Painted Aluminum  
**SES** Standard



17" Premium Dark Stainless-Painted  
Machined Aluminum  
**Titanium** Standard



**TITANIUM.** Lightning Blue Metallic.



DIMENSIONS & CAPACITIES

Exterior (in.)	4WD
Wheelbase	99.2
Length	161.3
Height	65.1
Width – Mirrors folded	71.9
Width – Including mirrors	81.0

Interior (in.)	Front/Rear
Head room	39.6/37.5
Leg room (max.)	42.9/36.7
Hip room	51.6/50.9
Shoulder room	53.3/51.3

Capacities (cu. ft.)	
Passenger volume	91.1
Cargo volume behind front seats	50.0¹
Cargo volume behind rear seats	20.5¹
Fuel tank (gal.)	13.6

STANDARD FEATURES

MECHANICAL
Active grille shutters
Auto Start-Stop Technology
Battery saver
Electric power-assisted steering
Intelligent 4WD
Tire inflator and sealant kit

FORD CO-PILOT360™ TECHNOLOGY
Autolamp (Automatic On/Off Headlamps)
Hill Start Assist
Rear View Camera

COMFORT & CONVENIENCE
4 cargo area tie-down hooks
8 cupholders
12V powerpoints (2)
60/40 flip-up and split-fold-flat rear seats
Folding front-passenger grab handle
Particulate air filter
Power windows with driver's one-touch-up/-down feature
Supplemental PTC heater
Variable-intermittent windshield wipers with washer; intermittent rear wiper with washer

CONNECTIVITY & ENTERTAINMENT
FordPass™ Connect² with 4G LTE Wi-Fi hotspot capability³

SAFETY & SECURITY
Personal Safety System™ for driver and front passenger includes dual-stage front airbags⁴
Driver and front-passenger knee airbags⁴
Front- and rear-seat side airbags⁴
Safety Canopy® System with side-curtain airbags⁴ and rollover sensor
AdvanceTrac™ with RSC® (Roll Stability Control™)
Individual Tire Pressure Monitoring System (TPMS)
MyKey® technology to help encourage responsible driving
Remote Keyless Entry System
SecuriLock® Passive Anti-Theft System
SOS Post-Crash Alert System™

S	SE	SES	TITANIUM
S	S	S	S
ENGINE & TRANSMISSION			
2.0L Ti-VCT I-4 engine with 166 hp @ 6,500 rpm <sup>5,6</sup> 149 lb.-ft. of torque @ 4,500 rpm <sup>5,6</sup> and 2,000-lb. max. towing capacity <sup>6,7</sup>			
S	S	S	S
6-speed SelectShift® automatic transmission			
		S	
MECHANICAL			
Sport-tuned suspension			
FORD CO-PILOT360 TECHNOLOGY			
	S	S	S
Rear Parking Sensors			
	P	S	S
BLIS® (Blind Spot Information System) with Cross-Traffic Alert			
		S	S
Rain-Sensing Windshield Wipers			
S			
COMFORT & CONVENIENCE			
Front carpeted floor mats			
S			
Manual air conditioning			
S	S		
4-way manual driver and front-passenger bucket seats			
		P	
Leather-wrapped steering wheel			
		S	
Heated, leather-wrapped steering wheel with unique stitching and chrome insert			
		S	S
Auto-dimming rearview mirror			
			S
Heated, leather-wrapped steering wheel			
			S
Perimeter alarm			
S	S	S	
Cargo area cover and package tray			
S	S	S	
Cargo Management System with adjustable shelf			
S	S	S	
Electronic automatic temperature control			
S	S	S	
Front and rear carpeted floor mats			
S	S	S	
Heated front seats			
S	S	S	
Intelligent Access with push-button start			
S	S	S	
Power moonroof with sunshade			
S	S	S	
Windshield wiper de-icer			
	P	S	S
6-way power driver seat and 4-way manual front-passenger seat			
P	S	S	
110V/150W AC power outlet			
P	S	S	
Ambient lighting			

S	SE	SES	TITANIUM
S			
CONNECTIVITY & ENTERTAINMENT			
SYNC® Voice Recognition Communications System with 4.2" LCD screen in center stack, 911 Assist®, AppLink®, and 2 smart-charging USB ports			
S	S		
AM/FM stereo with MP3 capability and 6 speakers			
	P	S	
AM/FM stereo with MP3 capability and 7 speakers			
			S
B&O® Sound System with 10 speakers including a subwoofer, 660 watts, and HD Radio™ Technology			
	S	S	S
SiriusXM® with 3-month Platinum Plan trial subscription⁸			
	S	S	S
SYNC 3 with 8" LCD capacitive touchscreen in center stack, 911 Assist, AppLink, Apple CarPlay® compatibility, Android Auto™ compatibility, and 2 smart-charging USB ports			
	P	S	S
Voice-Activated Touchscreen Navigation System with pinch-to-zoom capability (includes SiriusXM Traffic and Travel Link® with 5-year subscription⁸)			

S	SE	SES	TITANIUM
S			
APPEARANCE			
Black grille; and black molded-in-color door handles and power sideview mirrors with integrated blind spot mirrors			
S			
Halogen quad-beam reflector headlamps and configurable daytime running lamps			
	S		
Silver Lining-painted grille; body-color fog lamp bezels, door handles, and power sideview mirrors with turn signal indicators; black roof-rack side rails; and Ano Gray instrument panel appliquéés			
		S	
Black-painted grille and surround; black headlamp bezels; gloss black-painted fog lamp bezels; power, heated sideview mirrors with turn signal indicators and gloss black mirror caps; unique black rocker moldings with Ford EcoSport® logo; unique taillamps with blackout treatment; black roof with black-painted roof-rack side rails; unique black rear spoiler; body-color door handles; and Ano Gray instrument panel appliquéés			
			S
Chrome grille; metallic-colored front and rear bumper accents; body-color door handles and power, heated sideview mirrors with turn signal indicators; silver-painted roof-rack side rails; bright swing gate appliqué; high-gloss black-painted instrument panel appliquéés			
	S	S	S
Halogen quad-beam projector-style headlamps and LED configurable daytime running lamps			
	S	S	S
Privacy glass on all rear windows			

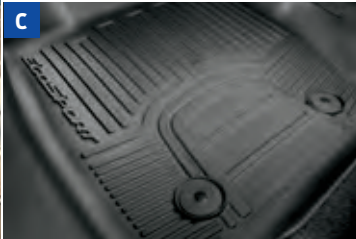
S	SE	SES	TITANIUM
OPTIONS			
0	0	0	0
Engine block heater			
0	0	0	0
Front and rear molded splash guards			
0	0	0	0
Keyless entry keypad			
0	0	0	0
Remote Start System			
0	0	0	0
Sport decals for hood, side doors and swing gate			
	0		
PACKAGES			
SE Appearance Package: 17" Shadow Silver aluminum wheels, 6-way power driver's seat with manual lumbar, unique Ebony Black cloth-trimmed seats with orange copper accents, orange instrument panel appliquéés, and leather-wrapped steering wheel			
	0		
SE Convenience Package: 110V/150W AC power outlet; 7 speakers; ambient lighting; BLIS (Blind Spot Information System) with Cross-Traffic Alert; and Voice-Activated Touchscreen Navigation System with pinch-to-zoom capability (includes SiriusXM Traffic and Travel Link with 5-year subscription⁸)			
0	0	0	0
Cargo Management Package: cargo net and cargo organizer			
	0	0	0
Interior Protection Package: cargo mat, and front and rear floor liners			

1. Cargo and load capacity limited by weight and weight distribution. 2. FordPass Connect, the FordPass App, and complimentary Connected Service are required for remote features (see FordPass Terms for details). Connected service and features depend on compatible AT&T network availability. Evolving technology/cellular networks/vehicle capability may limit functionality and prevent operation of connected features. Connected service excludes Wi-Fi hotspot. 3. Wi-Fi hotspot includes complimentary wireless data trial that begins upon AT&T activation and expires at the end of 3 months or when 3GB of data is used, whichever comes first. To activate, go to www.att.com/ford. 4. Always wear your safety belt and secure children in the rear seat. 5. Horsepower and torque ratings based on premium fuel per SAE J1349® standard. Your results may vary. 6. Horsepower, torque and towing are independent attributes and may not be achieved simultaneously. 7. EcoSport does not offer factory-installed towing equipment for this application; only available as aftermarket accessory. When properly equipped with an available Class I trailer tow package. Max. towing varies based on cargo, vehicle configuration, accessories and number of passengers. 8. Trial length and service availability may vary by model, model year or trim. Radio features, content and display may vary by vehicle. Some features may not be available while driving. Your trial subscription will automatically stop at the end of your trial period. Subscriptions offered and sold separately by SiriusXM for continued use after trial. Services are subject to the SiriusXM Customer Agreement and Privacy Policy available at siriusxm.com which includes complete terms and how to cancel which includes online methods or calling 1-866-635-2349. All fees, content and features are subject to change.





**TITANIUM** in Ruby Red Metallic Tinted Clearcoat<sup>1</sup> accessorized with hood deflector, side window deflectors<sup>2</sup> front and rear molded splash guards, keyless entry keypad, roof crossbars<sup>2</sup> roof-mounted bike carrier<sup>2,3</sup> and wheel lock kit. Recreational equipment not included.



**A.** Cargo area protector

**B.** Portable mini-fridge<sup>2</sup>

**C.** Floor liners

**D.** Dash cam systems<sup>2</sup>

SHOP THE COMPLETE COLLECTION | [accessories.ford.com](https://accessories.ford.com)

**Ford Credit®** Get the ride you want. Whether you plan to lease or buy, Ford Credit has the option that's right for you. Ask your Ford Dealer for details or visit us online at [ford.com/finance](https://ford.com/finance).

**Ford Insure.** Insurance that lets you earn discounts for safe driving, offering a maximum discount of 40% off your auto insurance. Ford Insure works with your 2022 EcoSport® to gauge driving habits and calculate a discount based on how you drive. Visit [fordinsure.com](https://fordinsure.com) to learn more.

*American Road Services Company LLC (a Ford affiliate) is the licensed insurance agency offering Ford Insure and is underwritten by Nationwide Mutual Insurance Company and affiliates. Home Office: Columbus, OH. Ford Motor and Ford Credit are not insurance companies or agents. Subject to underwriting guidelines, review and approval. Details and availability varies; program criteria differ in California. Discounts do not apply to all coverage elements; actual savings vary by state, coverage selections, rating factors and policy changes.*

**Ford Licensed Accessories (FLA)** are warranted by the accessory manufacturer's warranty. FLA are designed and developed by the accessory manufacturer and have not been designed or tested to Ford Motor Company engineering requirements. Contact your Ford Dealer for details and/or a copy of all limited warranties.

**Ford Original Accessories.** They're warranted for whichever provides you the greatest benefit: 24 months/unlimited mileage, or the remainder of your Bumper-to-Bumper 3-year/36,000-mile (whichever comes first) New Vehicle Limited Warranty.

**Ford Protect™ Extended Service Plans.** Whether you purchase or lease your Ford vehicle, insist on genuine Ford Protect extended service plans. Ford Protect has a variety of plans to give you peace-of-mind protection whether you want vehicle component or maintenance coverage. Plus, they are fully backed by Ford and honored at all Ford dealerships in the U.S., Canada and Mexico. When you visit your dealer, insist on genuine Ford Protect extended service plans.

**New Vehicle Limited Warranty.** We want your Ford EcoSport ownership experience to be the best it can be. Under this warranty, your new vehicle comes with 3-year/36,000-mile bumper-to-bumper coverage (whichever comes first), 5-year/60,000-mile Powertrain Warranty coverage (whichever comes first), 5-year/60,000-mile safety restraint coverage (whichever comes first), and 5-year/unlimited-mile corrosion perforation (aluminum panels do not require perforation) coverage (whichever comes first) – all with no deductible. Please ask your Ford Dealer for a copy of this limited warranty.

**Roadside Assistance.** Covers your vehicle for 5 years or 60,000 miles (whichever comes first), so you have the security of knowing that help may be only a phone call away should you run out of fuel, lock yourself out of the vehicle or need a winch back to a paved road, a battery jump start or towing. Your Ford Dealer can provide complete details on all of these advantages.

## EPA-ESTIMATED RATINGS

Actual mileage will vary.

**2.0L Ti-VCT I-4**

**4WD**

**23 CITY MPG  
29 HWY MPG  
25 COMB MPG**

**1.** Additional charge. **2.** Ford Licensed Accessory. **3.** Consult Owner's Manual for details on roof-rack load limits.

Ford and Oval Device, 911 Assist, ActiveX, AdvanceTrac, AppLink, BLIS, EcoSport, Ford Co-Pilot360, Ford Credit, Ford Protect, FordPass, FordPass. Built to Keep You Moving., MyKey, Personal Safety System, Roll Stability Control, RSC, Safety Canopy, SecuriLock, SelectShift, SOS Post-Crash Alert System, SYNC and related marks are trademarks of Ford Motor Company.

Alexa and all related logos are trademarks of amazon.com, Inc. or its affiliates. Android Auto and Google are trademarks of Google LLC. Apple CarPlay and Siri are trademarks of Apple Inc., registered in the U.S. and other countries. BANG & OLUFSEN and B&O are registered trademarks of Bang & Olufsen Group. Licensed by Harman Becker Automotive Systems Manufacturing Kft. All rights reserved. HD Radio is a proprietary trademark of iBiquity Digital Corporation. SiriusXM, Pandora and all related logos are trademarks of Sirius XM Radio Inc. and its respective subsidiaries.

Comparisons based on competitive models (class is Mini Utility), publicly available information and Ford certification data at time of release. Vehicles may be shown with optional equipment. Features may be offered only in combination with other options or subject to additional ordering requirements/limitations. Dimensions shown may vary due to optional features and/or production variability. Information is provided on an "as is" basis and could include technical, typographical or other errors. Ford makes no warranties, representations, or guarantees of any kind, express or implied, including but not limited to, accuracy, currency, or completeness, the operation of the information, materials, content, availability, and products. Ford reserves the right to change product specifications, pricing and equipment at any time without incurring obligations. Your Ford Dealer is the best source of the most up-to-date information on Ford vehicles.





From day one, we had the future in mind. And over 118 years later, we continue that tradition of innovation. Ford Co-Pilot360™ Technology is helping push us closer to autonomous driving. The latest generation of voice-activated SYNC® fosters untethered communication. And our fully electric vehicles – the all-new 2022 Ford F-150 Lightning® pickup and the Mustang Mach-E® SUV – are charging across America.

We've always had our mind on the future. Now we're building it.

22ESPPDF

©2021 Ford Motor Company



## FordPass. Built to Keep You Moving.™

Meet FordPass.™ The app<sup>1</sup> that lets you access complimentary remote features including start/stop and lock/unlock, monitor your fuel level and oil life,<sup>2</sup> and puts Rewards, Roadside Assistance<sup>3</sup> and more in the palm of your hand.



**SCAN TO DOWNLOAD**  
or visit [FordPass.com](https://fordpass.com)  
*Data rates may apply.*

**1.** The FordPass App, compatible with select smartphone platforms, is available via download. Message and data rates may apply. **2.** FordPass Connect, the FordPass App, and complimentary Connected Service are required for remote features (see FordPass Terms for details). Connected service and features depend on compatible AT&T network availability. Evolving technology/cellular networks/vehicle capability may limit functionality and prevent operation of connected features. Connected service excludes Wi-Fi hotspot. **3.** Roadside Assistance is included for certain owners and available to everyone for a per-service fee. Ford reserves the right to change program details without obligations. Ford Roadside Assistance is a complimentary offering to all Ford owners for up to 5 years or 60,000 miles (from the date of sale), whichever comes first.