





BASE

All the key features that make a Bronco a Bronco. Plus, 35" tires in the available Sasquatch™ Package. Ripe for personalization by a full line of factory-backed accessories.



BIG BEND™

Interested in some creature comforts? Big Bend gets a leather-wrapped steering wheel and aluminum wheels. Available heated front seats, 110V power outlet, remote start and more.



BLACK DIAMOND™

Next-level outdoor driving experience: locking rear differential, steel bumpers, rock rails, heavy-duty steel bash plates and 7 G.O.A.T. Modes.™ Plus, marine-grade vinyl seat trim and a washout interior.



OUTER BANKS™

Mounted on 18" aluminum wheels, Outer Banks gets LED signature lighting and taillamps, body-color fender flares and powder-coated tube steps. Also available: a 12" LCD touchscreen and B&O™ Sound System.



BADLANDS™

The most capable Bronco in the lineup: BILSTEIN™ shocks, a front stabilizer bar disconnect and locking differentials. Available 35" or 33" mud- or all-terrain tires. Seats in marine-grade vinyl or available leather trim.



WILDTRAK™

Take thrills head on with the standard Sasquatch Package: 35" tires, 17" beadlock-capable wheels, locking differentials, and BILSTEIN shocks. Also standard: the 2.7L twin-turbocharged EcoBoost® V6, 10-speed automatic, black grille and unique hood graphics. Developed and tested in legendary racing locations like Johnson Valley, California.

2-DOOR BADLANDS. Shadow Black. Available equipment. **4-DOOR BADLANDS.** Area 51. Available equipment. **2-DOOR BLACK DIAMOND.** Cyber Orange Metallic Tri-coat! Available Sasquatch Package. Available equipment.

Vehicle imagery throughout this brochure may be computer-generated and may include available and aftermarket equipment, and available Ford Accessories. Recreational equipment not included. Preproduction models may be shown throughout. 1. Additional charge.



BUILT WILD™

When it was introduced, the original Ford Bronco™ helped launch a whole new class of thrilling off-road vehicles. Now, it has returned.

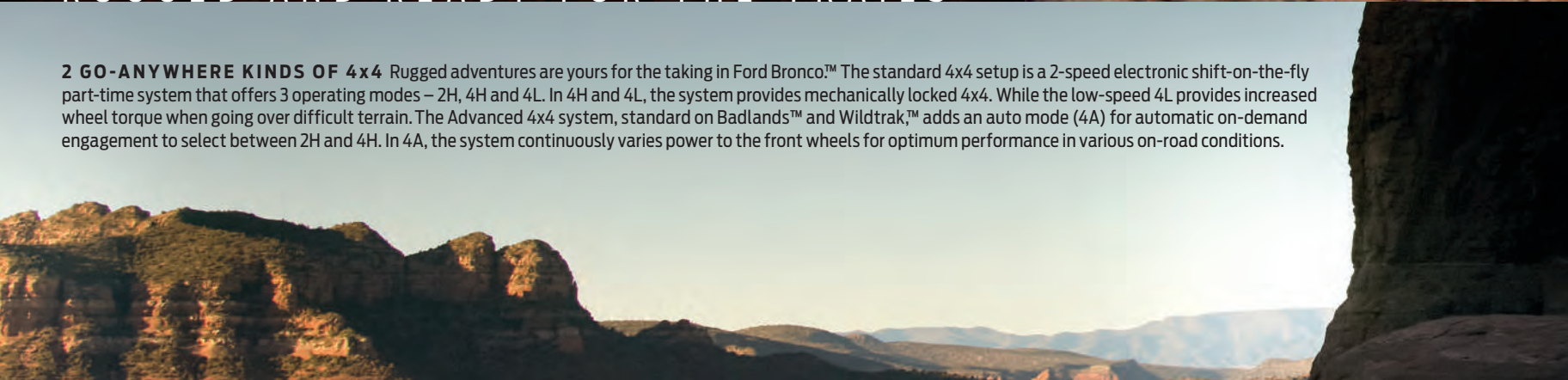
Here to take you back into the mountains, the woods, and remote locations that the adventurous call home. Available as a heritage-true 2-Door and first-ever Bronco 4-Door, with 6 unique models and an array of available Ford Accessories to choose from, there are plenty of ways to build an adventure-seeking beast that fits your lifestyle. So get ready to mount up. Ford Bronco is back.





RUGGED AND READY FOR THE TRAILS

2 GO-ANYWHERE KINDS OF 4x4 Rugged adventures are yours for the taking in Ford Bronco.™ The standard 4x4 setup is a 2-speed electronic shift-on-the-fly part-time system that offers 3 operating modes – 2H, 4H and 4L. In 4H and 4L, the system provides mechanically locked 4x4. While the low-speed 4L provides increased wheel torque when going over difficult terrain. The Advanced 4x4 system, standard on Badlands™ and Wildtrak,™ adds an auto mode (4A) for automatic on-demand engagement to select between 2H and 4H. In 4A, the system continuously varies power to the front wheels for optimum performance in various on-road conditions.







37.2° DEPARTURE
ANGLE¹

29° BREAKOVER
ANGLE¹

43.2° APPROACH
ANGLE¹



11.6" AVAILABLE MAX.
GROUND CLEARANCE¹



33.5" AVAILABLE MAX.
WATER-FORDING² CAPABILITY

4-DOOR OUTER BANKS (above). Rapid Red Metallic Tinted Clearcoat.³ Available Sasquatch™ Package. Available equipment. Recreational equipment not included.

Always consult the Owner's Manual before off-road driving, know your terrain and trail difficulty, and use appropriate safety gear. Professional driver on closed course. 1. 2-Door model with available 35" tires. Dimensions vary by trim level and model. See your dealer for details. 2. Water-fording capability of 33.5" depth with available Sasquatch Package. Always determine the water depth before attempting a crossing and proceed slowly. Refer to your Owner's Manual for detailed information regarding driving through water. 3. Additional charge.





THE WHOLE HOSS One of the keys to the thrilling, off-road prowess of the Ford Bronco™ is its High-Performance, Off-Road, Stability, Suspension (HOSS) System. A modern independent front suspension, consisting of 2 aluminum A-arms and coilovers, helps keep you traveling smoothly. While a 5-link coil-sprung solid axle sits in the rear. Available upgrades include BILSTEIN™ position-sensitive shock absorbers with end-stop control valves; and a semi-active hydraulic stabilizer bar disconnect (standard on Badlands™), which can electronically disconnect and reconnect under load and on uneven ground.

4-DOOR BADLANDS. Rapid Red Metallic Tinted Clearcoat.¹ Available equipment.

1. Additional charge.



A MODE TO MATCH THE ENVIRONMENT Terrain Management System™ with G.O.A.T. Modes™ Goes Over Any Type of Terrain. These driving modes give you the ability to match performance to the terrain, weather, or whatever the roads and trails throw your way, at the simple turn of a dial. You can take advantage of up to 7 available modes – from Normal to Baja – depending on the model.

4-DOOR WILDTRAK™ Cactus Gray. Available equipment.

Always consult the Owner's Manual before off-road driving, know your terrain and trail difficulty, and use appropriate safety gear.

G.O.A.T. MODES

All models

NORMAL

For everyday driving. A perfect balance of excitement, comfort and convenience.

ECO

Tuned to help reduce fuel consumption.

SLIPPERY

Enables confident driving on slippery surfaces, helps make Bronco easier to control.

SAND

For off-road use only. Fun driving in soft, dry sand.

All models except Base

MUD/RUTS

For off-road use only. Adapts systems to give optimum experience on muddy or uneven terrain.

All models except Badlands

SPORT

Sporty driving with improved performance. Quicker shifts, enhanced powertrain sound.

Black Diamond™ and Badlands only

ROCK CRAWL

For off-road use only at very low speed and controlled crossing of uneven terrain that can include large rocks.

ABAJA

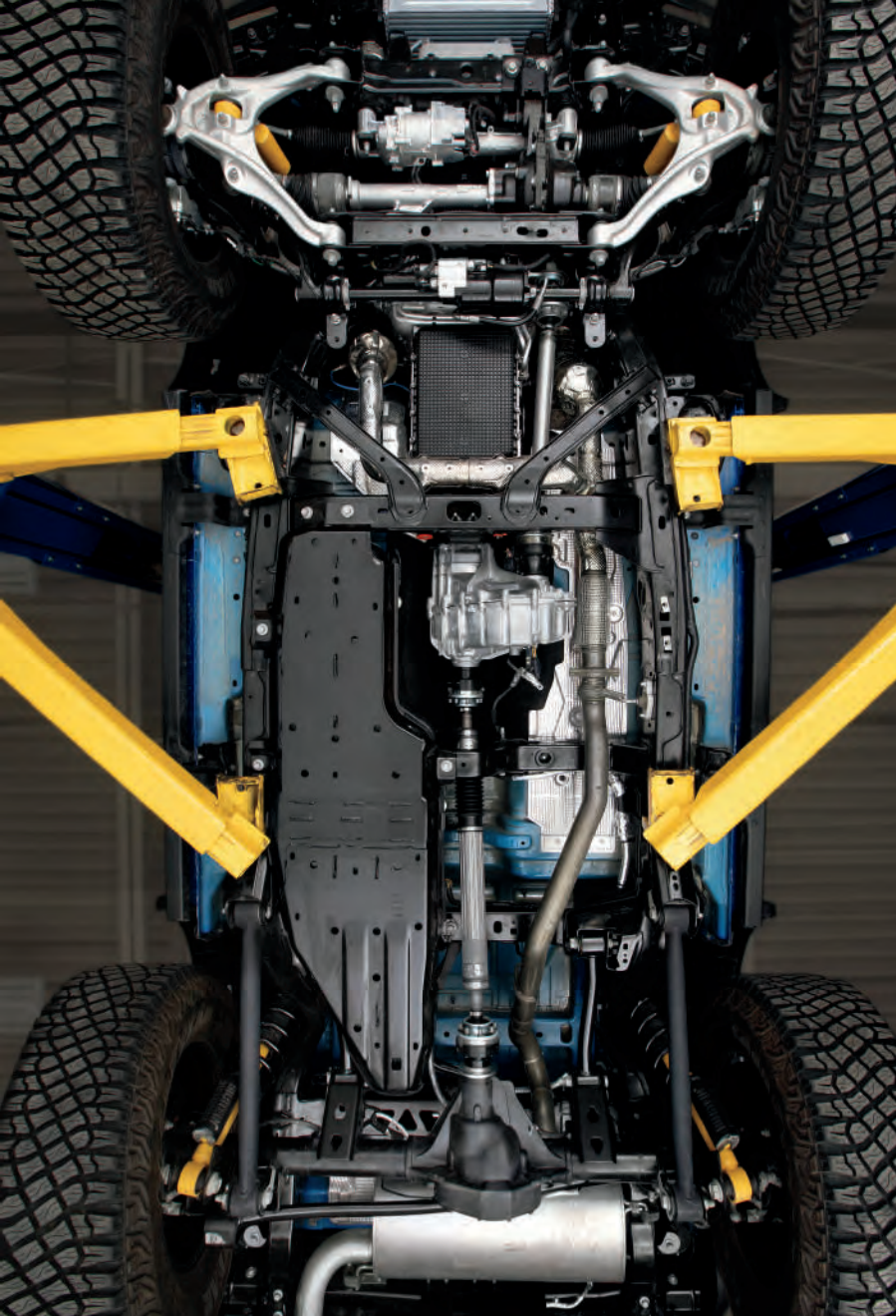
For off-road use only. Vehicle response tuned for high-speed off-road performance.



YOUR TRAIL TOOL BOX Ford Bronco™ offers a number of innovative technologies to help you get from point A to point Z all the way over there. Available Trail Control,™ which requires the 10-speed automatic transmission, manages throttle and braking at individual wheels, allowing you to focus more on the steering when on difficult terrain. Two class-exclusive,¹ class-first technologies are offered as well. Available Trail Turn Assist reduces turning radius at low speeds to help you make those tight corners (requires 10-speed automatic transmission). Available Trail 1-Pedal Drive,² which requires the 2.7L engine, enables low-speed crawling that lets you bring the vehicle to a stop, all without using the brake pedal.

1. Class is Medium Traditional Utility. **2.** One-Pedal Drive is an extra driving aid. It does not replace the driver's attention and judgment, or the need to apply the brakes. See Owner's Manual for details and limitations.

Always consult the Owner's Manual before off-road driving, know your terrain and trail difficulty, and use appropriate safety gear.



AVAILABLE FORD PERFORMANCE HEAVY-DUTY MODULAR FRONT BUMPER

AVAILABLE BRUSH GUARD

AVAILABLE FRONT STABILIZER BAR DISCONNECT

MAXIMUM CRAWL RATIOS:

MANUAL 94.75:1 AUTOMATIC 67.8:1

AVAILABLE ROCK RAILS

AVAILABLE HEAVY-DUTY STEEL BASH PLATES

FULLY BOXED HIGH-STRENGTH-STEEL FRAME

**AVAILABLE SPICER® PERFORMA-TRAK™ FRONT AND REAR
ELECTRONIC-LOCKING DIFFERENTIALS**

DANA ADVANTEK® INDEPENDENT FRONT AXLE ASSEMBLY

DANA 44™ ADVANTEK SOLID REAR AXLE

AVAILABLE 35" LT315/70R17 MUD-TERRAIN TIRES

FRONT AND REAR TOW HOOKS

AVAILABLE HOSS SYSTEM WITH BILSTEIN™ POSITION-SENSITIVE SHOCKS

AVAILABLE ADVANCED 4x4 WITH AUTOMATIC ON-DEMAND ENGAGEMENT





POWER IS IN ITS NATURE

CLASS-EXCLUSIVE 7- AND 10-SPEED TRANSMISSIONS

The 7-speed manual transmission delivers an available crawl ratio of up to 94.75:1. The available 10-speed automatic has a max. crawl ratio of 67.8:1, offers impressive low gears, and helps keep you in the engine's power band.

1. Horsepower and torque ratings based on premium fuel per SAE J1349® standard. Your results may vary. Horsepower and torque are independent attributes and may not be achieved simultaneously.

2.3L ECOBOOST® ENGINE Power your way through the trails in Ford Bronco™ with the standard turbocharged, direct-injected 2.3L. It delivers exhilarating performance, cranking out 300 hp¹ and 325 lb.-ft.¹ of torque – the most 4-cylinder gasoline hp and standard torque in its class.





2.7L ECOBOOST ENGINE Bring more power to your off-roading or trail riding when you opt for the available intercooled 2.7L EcoBoost engine with twin turbochargers. Capable of pumping out 330 hp¹ and 415 lb.-ft. of torque,¹ the most horsepower and torque of any gasoline 6-cylinder engine in its class. Just the right amount to accelerate your adventures.





THE OPEN AIR RUSH





TAKE IT OFF THE TOP Easy to pull off and store, Ford Bronco™ removable roof options help bring you closer to the great outdoors. The 4-Door offers both a standard cloth top and available 4-section hard top, and we've designed it so you can enjoy an uninterrupted view of the sky. 2-Door owners get a standard hard top with 3 removable sections. Bronco also includes removable doors. Storable inside the 4-Door, they make for a thrilling open-air experience. Removal of doors for off-road use only.





LED HEADLAMPS & AVAILABLE LED FOG LAMPS

AVAILABLE HEAVY-DUTY MODULAR BUMPER

FRONT TOW HOOKS



BODY-MOUNTED MIRRORS

FENDER TIE-DOWN HOOKS

AVAILABLE LED TAILLAMPS

REMOVABLE FENDER FLARES

AVAILABLE STEEL REAR BUMPER

REAR TOW HOOKS

AVAILABLE 35" TIRES

AVAILABLE ROCK RAILS

BUILT FOR YOUR RUGGED ADVENTURES From a chassis architecture standpoint, the Ford Bronco™ uses a body-on-frame setup, with a fully boxed, high-strength-steel ladder design. The doors, hood, front fenders and rear swing gate are made of aluminum. There's also plenty of underbody protection offered, with available bash plates protecting vulnerable parts underneath. Badlands™ and Black Diamond™ models get an upgraded steel front bash plate, plus bash plates for the engine, transmission, transfer case and fuel tank. Side rock rails are also available, strong enough to help support the weight of the Bronco if you encounter some boulders.

There's a lot happening inside the Ford Bronco.™ Removable grab handles. Kickin' design details. Available washout-capable, rubberized flooring with drain plugs. An off-road hero switch pack that, depending on the model, lets you control up to 6 features like the traction control, an available front stabilizer bar disconnect, and available front and rear Spicer® Performa-Trak™ electronic-locking differentials. There's even an available MOLLE strap system. And that's just a start.







CONNECT WITH MORE THAN JUST NATURE

INNOVATIVE TRAIL MAPPING Ford Bronco™ offers you the first-ever all-in-one app for rugged SUVs: the available FordPass™ Performance App with class-exclusive Off-road Navigation! It's your go-to for electronic trail content from pro trail guide providers such as Trails Off-Road and FunTreks. Download topo maps and satellite imagery for offline use. Record video and vehicle telemetry to your dash-mounted mobile phone, and play it back when stopped to see customized overlays of your GPS, speed, rpm, pitch, yaw and more. The app even makes it easy to share trip summaries to your social media.

FORD POWER-UP SOFTWARE UPDATES From new features to minor software enhancements, we can continuously help keep your vehicle on the forefront of technology. Software updates are delivered wirelessly – directly to your vehicle via standard FordPass Connect² or Wi-Fi. So we can make sure your Bronco has the very latest without missing a beat.

SYNC® 4 The latest communications system from Ford is available on every Bronco model, and brings new levels of intelligence, available conversational voice command recognition and computing power to help make navigation, music and connecting your vehicle to your smartphone quick and easy.³ SYNC 4 is viewable on either the standard 8" or an available 12" touchscreen. Available Connected Navigation Systems^{2,4} offer up real-time weather, traffic and construction information along your route, plus business hours, ratings and more in the Points-Of-Interest when connected.

Also, offered with the 12" version is an available 360-Degree Camera. With class-exclusive off-road spotter views, this camera provides additional visibility when you're engaged in technical maneuvers such as rock crawling.

BRING THE DEVICES ALONG An available wireless charging pad⁵ lets you leave the cords at home. You can also bridge the gap between your smartphone and your Bronco thanks to standard wireless compatibility with Apple CarPlay® and Android Auto.^{TM6} With the available 4G LTE Wi-Fi hotspot and FordPass Connect,² you're able to connect up to 10 devices at once from inside the vehicle or up to 50' away. And with the FordPass App and FordPass Connect, you'll have access to complimentary remote features like start⁷/stop,⁷ lock/unlock, schedule a start,⁷ locate your vehicle and vehicle status check.





Don't drive while distracted or while using handheld devices. Use voice-operated systems when possible.

1. Available late summer 2021. Requires available factory-installed navigation system. Navigation subscription not required. Always consult the Owner's Manual before off-road driving, know your terrain and trail difficulty, and use appropriate safety gear. **2.** FordPass Connect, the FordPass App, and complimentary Connected Service are required for remote features (see FordPass Terms for details). Connected service and features depend on compatible AT&T network availability. Evolving technology/cellular networks/vehicle capability may limit functionality and prevent operation of connected features. Connected service excludes Wi-Fi hotspot. **3.** Some features may be locked out while the vehicle is in gear. Not all features are compatible with all phones. **4.** Navigation services require SYNC 4 and FordPass Connect, complimentary connect service and the FordPass App (see FordPass Terms for details). Eligible vehicles may receive a complimentary 90-day trial of navigation services, or if applicable, a 3-year trial of built-in navigation services that begin on the new vehicle warranty start date. Customers must unlock the navigation service trial by activating the eligible vehicle with a FordPass member account. If not subscribed by the end of the complimentary period, the navigation service will terminate, or depending on vehicle, the built-in connected navigation service will terminate. Built-in navigation system will revert to embedded offline navigation after termination. FordPass App, compatible with select smartphone platforms, is available via download. Message and data rates may apply. **5.** Qi wireless charging may not be compatible with all mobile phones. **6.** Requires phone with active data service and compatible software. SYNC 4 does not control 3rd-party products while in use. 3rd parties are solely responsible for their respective functionality. **7.** Automatic transmission only.

Preproduction screens shown are simulated and are subject to change. Source of content is NeoTrek™ Trails Offroad and FunTrek.

A FAMILY WITH ATTITUDE



GO TO EXTREMES BILSTEIN™ position-sensitive monotube shocks, a front stabilizer bar disconnect, and front and rear locking differentials help make the Badlands™ ultra-capable. And then some. Choose between standard 33" all-terrain tires or available 33" or 35" mud-terrain tires, and enjoy an interior that offers you a full range of features from easy-to-clean vinyl to a leather-trimmed option.

Race Red. Available equipment.

Always consult the Owner's Manual before off-road driving, know your terrain and trail difficulty, and use appropriate safety gear.



UP YOUR ADVENTURES Things get serious with Black Diamond.™ Standard locking rear differential, steel front and rear bumpers, and full-vehicle steel bash plates equip this Ford Bronco™ to be tougher on tough terrain. You get 7 total G.O.A.T. Modes™ Goes Over Any Type of Terrain, including Rock Crawl. Plus, washout-capable rubberized flooring makes for easy cleanup between adventures.

Oxford White. Available equipment.





HIGH-SPEED THRILLS Take your adventuring to greater heights with Wildtrak,[™] which comes equipped with the Sasquatch[™] Package standard. On top of the 2.7L twin-turbocharged EcoBoost[®] engine and 10-speed automatic transmission, you get 35" tires, and exterior stylings, including a black grille, black wheels and unique WILDTRAK hood graphics.

Cactus Gray. Available equipment.



OFF-ROAD IN STYLE Outer Banks™ goes all out to pair rugged good looks with performance. Mounted on 18" high-gloss black-painted aluminum-alloy wheels, this model features standard signature LED headlamps and taillamps, body-color fender flares and powder-coated tube steps. Inside, comfort and convenience for your off-road adventure come by way of an available 12" LCD touchscreen and B&O™ Sound System.

Carbonized Gray Metallic. Available equipment.



READY FOR MAINSTREAM OFF-ROADING

Big Bend™ is the next step up from the Base model, providing extra creature comforts on top of the standard Ford Bronco™ essentials. Aluminum wheels grace the outside. While inside, available features like heated seats, a 110V/150W AC outlet, and a Remote Start System that operates from your key fob, can be bundled in.

Velocity Blue Metallic. Available equipment.



BRONCO

START WITH THE BASICS The base model of Bronco comes with the absolute essentials and is the perfect starting point to begin customizing. Key features include what makes a Bronco a Bronco: standard 4x4, and easy-to-remove doors and roof. Consider pairing with various packages, including the available Sasquatch™ Package, for an ideal setup.

Antimatter Blue Metallic. Available equipment.



MAKE YOUR FORD BRONCO A LEGEND



Removal of doors for off-road use only.



THE SASQUATCH™ PACKAGE Available on every model and standard on Wildtrak.™ Paired with the 10-speed automatic transmission, this package is specifically tailored to give your Ford Bronco™ more off-roading prowess. 35" mud tires with 17" beadlock-capable wheels. High-clearance fender flares. A high-clearance suspension featuring position-sensitive BILSTEIN™ shock absorbers. And a 4.7 final drive ratio with electronic-locking front and rear axles. It's an all-in-one package meant to make your Bronco legendary.

Pursue your favorite outdoor hobbies with a comprehensive array of available accessories offered on the Ford Bronco™. From rooftop tents to off-road lights, kayak carriers and bike racks, there are plenty of ways to bring your adventure gear along for the ride. SHOP THE COMPLETE COLLECTION | accessories.ford.com



FITTED FOR YOUR LIFESTYLE





EXTERIOR & INTERIOR



1 Rapid Red Metallic Tinted Clearcoat¹



2 Velocity Blue Metallic



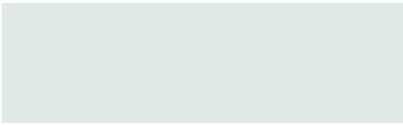
3 Shadow Black



4 Iconic Silver Metallic



5 Antimatter Blue Metallic



6 Oxford White



7 Carbonized Gray Metallic



8 Area 51



9 Cactus Gray



10 Race Red



11 Cyber Orange Metallic Tri-coat¹



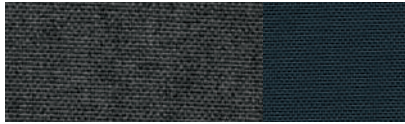
Standard
Black Onyx and Dark Space Gray Cloth
Base / 1-7 Big Bend / 1-10



Standard
Black Onyx and Medium Sandstone Cloth /
1-10



Standard
Black Onyx and Dark Space Gray Marine Grade Vinyl
/ 1-11



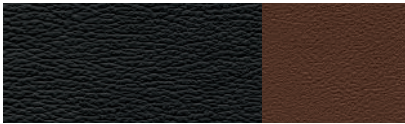
Standard
Dark Space Gray and Navy Pier Cloth / 1-11
Outer Banks



Standard
Roast and Black Onyx Cloth / 1-11
Outer Banks



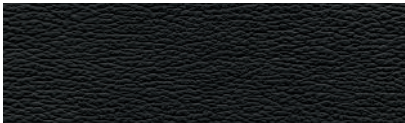
Optional
Navy Pier and Dark Space Gray Leather-Trimmed
/ 1-11



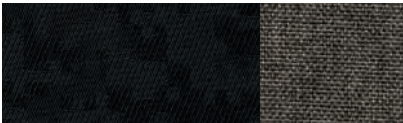
Optional
Black Onyx and Roast Leather-Trimmed / 1-11
Outer Banks



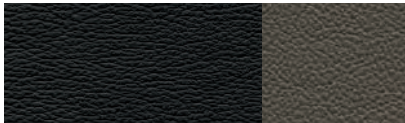
Standard
Black Onyx Marine Grade Vinyl / 1-11
Badlands



Optional
Black Onyx Leather-Trimmed / 1-11
Badlands



Standard
Black Onyx and Medium Sandstone Cloth /
1-11



Optional
Black Onyx and Medium Sandstone Leather-Trimmed
/ 1-11

Colors are representative only. See your dealer for actual paint/trim options. 1. Additional charge.

WHEELS & TIRES



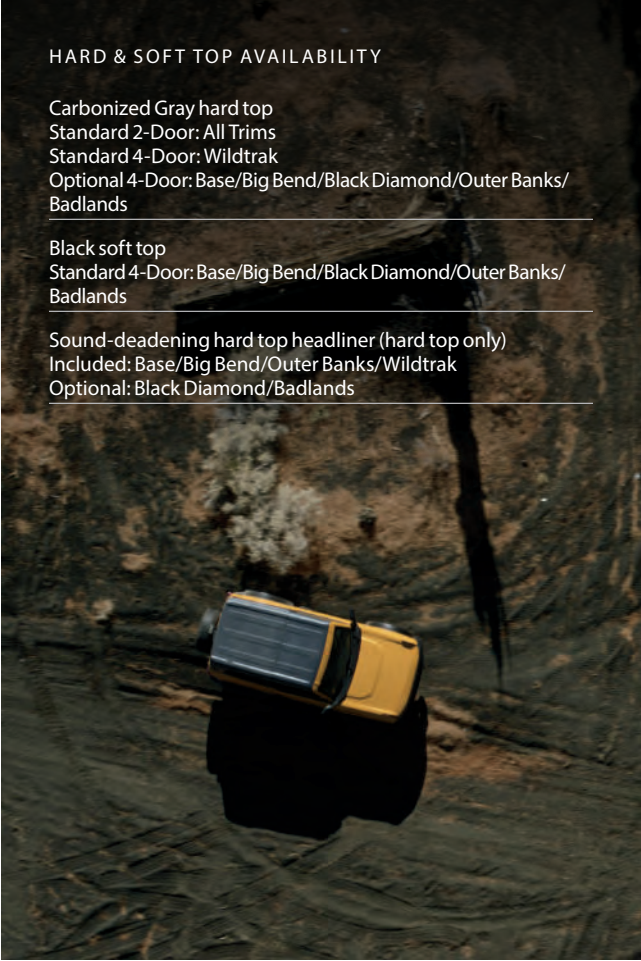
A. BASE	Standard	16" Bright Polished Silver-Painted Steel and 30" P255/70R16 A/S
B. BIG BEND™	Standard	17" Carbonized Gray-Painted Aluminum and 32" P255/75R17 A/T
C. BLACK DIAMOND™	Standard	17" Black Gloss-Painted Steel and 32" LT265/70R17 A/T
D. BLACK DIAMOND	Optional	17" Black High Gloss-Painted Aluminum and 32" LT265/70R17 A/T
E. OUTER BANKS™	Standard	18" Bright Machined Black High Gloss-Painted Aluminum and 32" P255/70R18 A/T
F. BADLANDS™	Standard	17" Machined Carbonized Gray-Painted Aluminum and 33" LT285/70R17 A/T
G. BADLANDS (optional)	Optional	17" Black High Gloss-Painted Aluminum and 33" LT285/70R17 A/T (included); 33" LT285/70R17 M/T
H. WILDTRAK™	Standard	17" Black High Gloss-Painted Aluminum with Black Beauty Rings and 35" LT315/70R17 M/T
I. SASQUATCH™ PACKAGE	Included	17" Black High Gloss-Painted Aluminum with Warm Alloy Beauty Rings and 35" LT315/70R17 M/T

HARD & SOFT TOP AVAILABILITY

Carbonized Gray hard top
Standard 2-Door: All Trims
Standard 4-Door: Wildtrak
Optional 4-Door: Base/Big Bend/Black Diamond/Outer Banks/
Badlands

Black soft top
Standard 4-Door: Base/Big Bend/Black Diamond/Outer Banks/
Badlands

Sound-deadening hard top headliner (hard top only)
Included: Base/Big Bend/Outer Banks/Wildtrak
Optional: Black Diamond/Badlands



STANDARD FEATURES

MECHANICAL

- Electric power-assisted steering
- Electronic parking brake
- Power disc brakes with Anti-Lock Brake System (ABS)

FORD CO-PILOT360™ TECHNOLOGY

- Auto High-Beam Headlamps
- Hill Descent Control™ (7-speed manual transmission only)
- Hill Start Assist
- Post-Collision Braking
- Pre-Collision Assist with Automatic Emergency Braking (AEB)
- Rear View Camera with Backup Assist Grid Lines

EXTERIOR

- Easy Fuel® capless fuel filler
- LED headlamps
- Rear carrier with full-size spare wheel and tire
- Removable roof and doors
- Tow hooks (2 front, 1 rear)

INTERIOR

- Split-fold rear seat (recline and armrest on 4-Door)
- 12V powerpoints (2)
- Carpeted front floor mats
- Configurable daytime running lamps
- Driver and front-passenger grab handles
- Locking center floor console
- Manual-tilt/-telescoping steering column
- Power windows with front one-touch-up/-down feature

CONNECTIVITY & ENTERTAINMENT

- FordPass™ Connect¹ with 4G LTE Wi-Fi hotspot capability²
- SiriusXM® with 360L with 3-month Platinum Plan trial subscription³

SAFETY & SECURITY

- Personal Safety System™ for driver and front passenger includes dual-stage front airbags⁴
- Front-seat side airbags⁴
- Safety Canopy® System with side-curtain airbags⁴ and rollover sensor
- AdvanceTrac™ with RSC® (Roll Stability Control™)
- Individual Tire Pressure Monitoring System (TPMS; excludes spare)
- Perimeter alarm

BASE	BIG BEND™	BLACK	OUTER BANKS™	BADLANDS™	WILDTRAK™
S	S	S	S	S	MECHANICAL 2.3L EcoBoost® engine with 300 hp @ 5,700 rpm⁵ and 325 lb.-ft. of torque @ 3,400 rpm⁵ (275 hp @ 5,700 rpm and 315 lb.-ft. of torque @ 3,400 rpm with regular fuel)
O	O	O	O	O	2.7L EcoBoost engine (requires 10-speed automatic transmission) with 330 hp @ 5,250 rpm⁵ and 415 lb.-ft. of torque @ 3,100 rpm⁵ (315 hp @ 5,500 rpm and 410 lb.-ft. of torque @ 3,250 rpm with regular fuel)
S	S	S	S	S	7-speed manual transmission with crawler gear⁶
A	A	A	A	S	10-speed automatic transmission⁶
A	A	A			3.73:1 final drive ratio⁶
	A	A			4.27:1 final drive ratio⁶
S	S	S	S	S	4.46:1 final drive ratio⁶
A	A	A	A	A	4.7:1 final drive ratio⁶
				O	Front stabilizer bar disconnect
	O	O	O	O	Towing capability
O	O	O	O	O	Engine block heater
S	S	S	S	S	4x4 Systems 4x4 with Part-Time Selectable Engagement (2-speed electronic shift-on-the-fly)
P	P	O	O	S	Advanced 4x4 with Automatic On-Demand Engagement (2-speed electromechanical transfer case)⁶
					Terrain Management System™ with G.O.A.T.
Modes™	S				5 G.O.A.T. Modes – Normal, ECO, Sport, Slippery and Sand
	S		S		6 G.O.A.T. Modes including Mud/Ruts
Crawl		S			7 G.O.A.T. Modes including Mud/Ruts and Rock
			S		7 G.O.A.T. Modes including Mud/Ruts, Rock Crawl and Baja (Sport mode not available)
				S	7 G.O.A.T. Modes including Mud/Ruts and
Baja					High-Performance, Off-Road, Stability, Suspension (HOSS) System
	S	S	S	S	HOSS System
P	P	P	P	S	HOSS System with BILSTEIN™ position-sensitive shock absorbers
	S	S	S	S	Axles⁶
P	P	P	P	S	M210 Dana AdvanTEK® independent front
				S	M210 Dana AdvanTEK independent front

BASE	BIG BEND	BLACK DIAMOND	OUTER BANKS	BADLANDS	WILDTRAK
S	S	S	S	S	M220 Dana 44 AdvanTEK solid rear
P	P	P	P	S	Spicer® Performa-TraK™ electronic-locking front differential
P	O	S	O	S	Spicer Performa-TraK electronic-locking rear differential
		S	S	O	Underbody Protection Full-vehicle steel bash plates (requires heavy-duty modular front bumper)
A	A	S	A	S	Front-end bash plate (included with heavy-duty modular front bumper)
		S	S		Rock rails
A	A	A	S	A	Trail Tool Box Trail Control™ and Trail Turn Assist (requires 10-speed automatic transmission)
A	A	A	A	S	Trail 1-Pedal Drive (requires 2.7L EcoBoost engine and 10-speed automatic transmission)
S	S	S	S		EXTERIOR Black door handles, fender flares and sideview mirror caps
		S			Body-color-painted door handles, fender flares and sideview mirror caps
				S	Black-painted sideview mirror caps; body-color-painted door handles; and Wildtrak hood graphic
O	O	S	O	S	Heavy-duty modular front bumper (deletes LED fog lamps)
	S	S	S	S	LED fog lamps
	S	S	S	S	Powder-coated steel rear bumper
	S	S	S	S	Privacy glass on all rear windows
			O		Wildtrak bodyside graphics
	O	S	S	S	LED signature lighting and taillamps
	O⁶	S	O		Powder-coated tube steps
S	S	S	S	S	INTERIOR 6-way manual driver and front-passenger seats
O	O	S	O	S	Auxiliary switches with pre-run accessory wires located in overhead console
	S	S	S	S	Front-passenger grab handle on center floor console

BASE	BIG BEND	BLACK DIAMOND	OUTER BANKS	BADLANDS	WILDTRAK		BASE	BIG BEND	BLACK DIAMOND	OUTER BANKS	BADLANDS	WILDTRAK		S: STANDARD O: OPTIONAL A: AVAILABLE P: PACKAGED	OFF-ROAD CAPABILITY				
															Ground clearance (in.) Base/Sasquatch Package	2-Door 8.4/11.6	4-Door 8.3/11.5		
shift knob	S	S	S	S	S	Leather-wrapped steering wheel and gear									Suspension travel (total mm) Base	Front/Rear 200/215	Front/Rear 200/215		
			S		S	Front seat back MOLLE strap system									Badlands	240/261	240/261		
			S		S	Rubberized flooring with drain plugs (washout capable)									Approach angle Base/Sasquatch Package	35.5°/43.2°	35.5°/43.2°		
only)				S	S	S	Carpeted front and rear floor mats (4-Door								Breakover angle Base/Sasquatch Package	21.1°/29.0°	20.0°/26.3°		
			A	A	A	10-way power driver's seat, 8-way power front-passenger seat and rear seat armrest with 2 beverage holders (4-Door only; included and only available with optional leather seating)		O	O	O	O	O			Departure angle Base/Sasquatch Package	29.8°/37.2°	29.7°/37.0°		
															Ramp travel index with stability bar Connected/disconnected (projected) Badlands only	560/700	500/620		
															Maximum water-fording (in.) Sasquatch Package	33.5	33.5		
capability			P	P	P	CONNECTIVITY & ENTERTAINMENT 12" LCD capacitive touchscreen with swipe	O	O	O	O	O	S			EPA-ESTIMATED FUEL ECONOMY RATINGS Actual mileage will vary.				
S	S	S	S	S	S	AM/FM stereo with 6 speakers									2.3L EcoBoost	Transmission	City MPG	Hwy MPG	Comb MPG
S	S	S		S		SYNC® 4 with 8" LCD capacitive touchscreen with swipe capability, wireless phone connection, 911 Assist®, AppLink® with App Catalog, wireless Apple CarPlay® and Android Auto™ compatibility, digital Owner's Manual, and Ford Power-Up software updates									Base, Big Bend	7-speed manual	20	22	21
	P	P	S	P	S	SYNC 4 with Enhanced Voice Recognition,® 8" LCD capacitive touchscreen with swipe capability, conversational voice command		O	O	S	O	S			Base, Big Bend, Outer Banks	10-speed automatic	20	22	21
															Black Diamond	7-speed manual	17	19	18
																10-speed automatic	18	18	18
															Badlands	7-speed manual	16	18	17
																10-speed automatic	18	17	17
															Sasquatch Package-equipped Base, Big Bend, Black Diamond, Outer Banks, Badlands	10-speed automatic	18	18	18
															2.7L EcoBoost				
															Base, Big Bend, Black Diamond, Outer Banks	10-speed automatic	18	20	19
															Badlands	10-speed automatic	17	18	17
															Wildtrak, First Edition and Sasquatch Package-equipped Base, Big Bend, Black Diamond, Outer Banks, Badlands	10-speed automatic	17	17	17

1. FordPass Connect, the FordPass App, and complimentary Connected Service are required for remote features (see FordPass Terms for details). Connected service and features depend on compatible AT&T network availability. Evolving technology/cellular networks/vehicle capability may limit functionality and prevent operation of connected features. Connected service excludes Wi-Fi hotspot. 2. Wi-Fi hotspot includes complimentary wireless data trial that begins upon AT&T activation and expires at the end of 3 months or when 3GB of data is used, whichever comes first. To activate, go to www.att.com/ford. 3. All SiriusXM services require a subscription, sold separately by SiriusXM after the trial period. Your SiriusXM service will automatically stop at the end of your trial unless you decide to subscribe. If you decide to continue service, the subscription plan chosen will automatically renew and be charged according to your chosen payment method at the then-current rates. Fees and taxes apply. See the SiriusXM Customer Agreement & Privacy Policy at www.siriusxm.com for full terms and how to cancel, which includes online methods or calling 1-866-635-2349. Available in the 48 contiguous United States, D.C., and Puerto Rico (with coverage limits and capable receiver). Visit <http://www.siriusxm.com/FAQS> for most current service area information. Availability of some services and features is subject to device capabilities and location restrictions. All fees, content and features are subject to change. Radio features, content, and display may vary by vehicle. Some features may not be available while driving. 4. Always wear your safety belt and secure children in the rear seat. 5. Horsepower and torque ratings based on premium fuel per SAE J1349® standard. Your results may vary. 6. Restrictions may apply. See your dealer for details. 7. Navigation services require SYNC 4 and FordPass Connect, complimentary connect service and the FordPass App (see FordPass Terms for details). Eligible vehicles may receive a complimentary

DIMENSIONS

Exterior (in.)	2-Door Hard Top	4-Door Soft Top
Wheelbase	100.4	116.1
Length	173.7	189.4
Height	71.9	73.0
Width – Mirrors folded	75.9	75.9
Track width (front/rear)	65.0/65.0	65.0/65.0
Interior (in.) (front/rear)		
Head room	41.0/39.8	43.3/41.1
Leg room	43.1/35.7	43.1/36.3
Hip room	56.3/43.3	55.9/54.8
Shoulder room	57.1/51.8	57.1/56.5
Capacities (cu. ft.)		
Cargo volume behind front seats	52.3	83.0
Cargo volume behind rear seats	22.4	38.3
Fuel tank (gal.)	16.9	20.8
Capability Ratings (lbs.)		
Max. towing ¹	3,500	3,500
Max. payload ²	1,170	1,370
Max. dynamic roof load	110	110
Max. static roof load	450	450 ³



Dimensions and capacities shown for Base Bronco model without options. Dimensions and capacities vary by model. See your Ford Dealer for complete details. Towing and payload are independent attributes and may not be achieved simultaneously. 1. When properly equipped with available towing capability. Max. towing varies based on cargo, vehicle configuration, accessories and number of passengers. 2. Max. payload varies and is based on accessories and vehicle configuration. See label on door jamb for carrying capacity of a specific vehicle. 3. Where offered, not available on 4-Door model with 315/70R17 tires.

Bronco Nation is not affiliated with Ford Motor Company. Ford and Oval Device, 911 Assist, AdvanceTrac, AppLink, Badlands, Big Bend, Black Diamond, BLIS, Bronco, Built Ford Proud, Built Wild, Easy Fuel, EcoBoost, Ford Co-Pilot360, Ford Credit, Ford Protect, FordPass, FordPass. Built to Keep You Moving., G.O.A.T. Modes, Hill Descent Control, Outer Banks, Personal Safety System, Roll Stability Control, RSC, Safety Canopy, Sasquatch, SYNC, Terrain Management System, Trail Control, Wildtrak and related marks are trademarks of Ford Motor Company.

Android Auto is a trademark of Google LLC. Apple CarPlay is a trademark of Apple Inc., registered in the U.S. and other countries. BANG & OLUFSEN and B&O are registered trademarks of Bang & Olufsen Group. Licensed by Harman Becker Automotive Systems Manufacturing Kft. All rights reserved. SiriusXM, Pandora and all related logos are trademarks of Sirius XM Radio Inc. and its respective subsidiaries.

Comparisons based on competitive models (class is Medium Traditional Utility), publicly available information and Ford certification data at time of release. Vehicles may be shown with optional equipment.



YOU'RE INVITED TO A ONCE-IN-A-LIFETIME EXPERIENCE

An off-roading and outdoor adventure playground for all skill levels – the Bronco Off-Road is designed to build your confidence, expand your skills and immerse you in the Bronco lifestyle. Enjoy incredible driving experiences at your choice of 4 epic destinations, while creating unforgettable memories and celebrating community, adventure and the great outdoors. As the original owner of a qualifying all-new 2021 Bronco,™ you'll have one calendar year from the date of vehicle delivery to register and attend. Additional reservations will be available for purchase on a first-come, first-served basis. Find out more and register today at broncooffroadeo.com.



At Ford, this is our mission to empower our organization, our dealer network and our communities to connect people to the outdoors, responsibly. It's about access and preservation. Inspired by the epic return of the legendary Ford Bronco SUV, we want to encourage people to go deeper into the outdoors. And motivate them to actively protect and enhance our public lands. Join us on our journey at broncowildfund.com.



Bronco Nation is the first nationwide community for the all-new 2021 Ford Bronco. Built by a passionate and knowledgeable gathering of enthusiasts, Bronco Nation celebrates an iconic brand and encourages everyone who loves Bronco to join. Check them out for curated content, community forums, events, interactive maps, and more – visit thebronconation.com.

Ford Credit® Get the ride you want. Whether you plan to lease or buy, Ford Credit has the option that's right for you. Ask your Ford Dealer for details or visit us online at ford.com/finance.

Ford Insure. Insurance that lets you earn discounts for safe driving, offering a maximum discount of 40% off your auto insurance. Ford Insure works with your 2021 Bronco to gauge driving habits and calculate a discount based on how you drive. Visit fordinsure.com to learn more.

American Road Services Company LLC (a Ford affiliate) is the licensed insurance agency offering Ford Insure and is underwritten by Nationwide Mutual Insurance Company and affiliates. Home Office: Columbus, OH. Ford Motor and Ford Credit are not insurance companies or agents. Subject to underwriting guidelines, review and approval. Details and availability varies; program criteria differ in California. Discounts do not apply to all coverage elements; actual savings vary by state, coverage selections, rating factors and policy changes.

Ford Licensed Accessories (FLA) are warranted by the accessory manufacturer's warranty. FLA are designed and developed by the

accessory manufacturer and have not been designed or tested to Ford Motor Company engineering requirements. Contact your Ford Dealer for details and/or a copy of all limited warranties.

Ford Original Accessories. They're warranted for whichever provides you the greatest benefit:

24 months/unlimited mileage, or the remainder of your Bumper-to-Bumper 3-year/36,000-mile (whichever comes first) New Vehicle Limited Warranty.

Ford Protect™ Extended Service Plans. Whether you purchase or lease your Ford vehicle, insist on genuine Ford Protect extended service plans. Ford Protect has a variety of plans to give you peace-of-mind protection whether you want vehicle component or maintenance coverage. Plus, they are fully backed by Ford and honored at all Ford dealerships in the U.S., Canada and Mexico. When you visit your dealer, insist on genuine Ford Protect extended service plans.

New Vehicle Limited Warranty. We want your Ford Bronco ownership experience to be the best it can be. Under this warranty, your new vehicle comes with 3-year/36,000-mile bumper-to-bumper coverage (whichever comes first), 5-year/60,000-mile Powertrain Warranty coverage (whichever comes



FordPass. Built to Keep You Moving.™

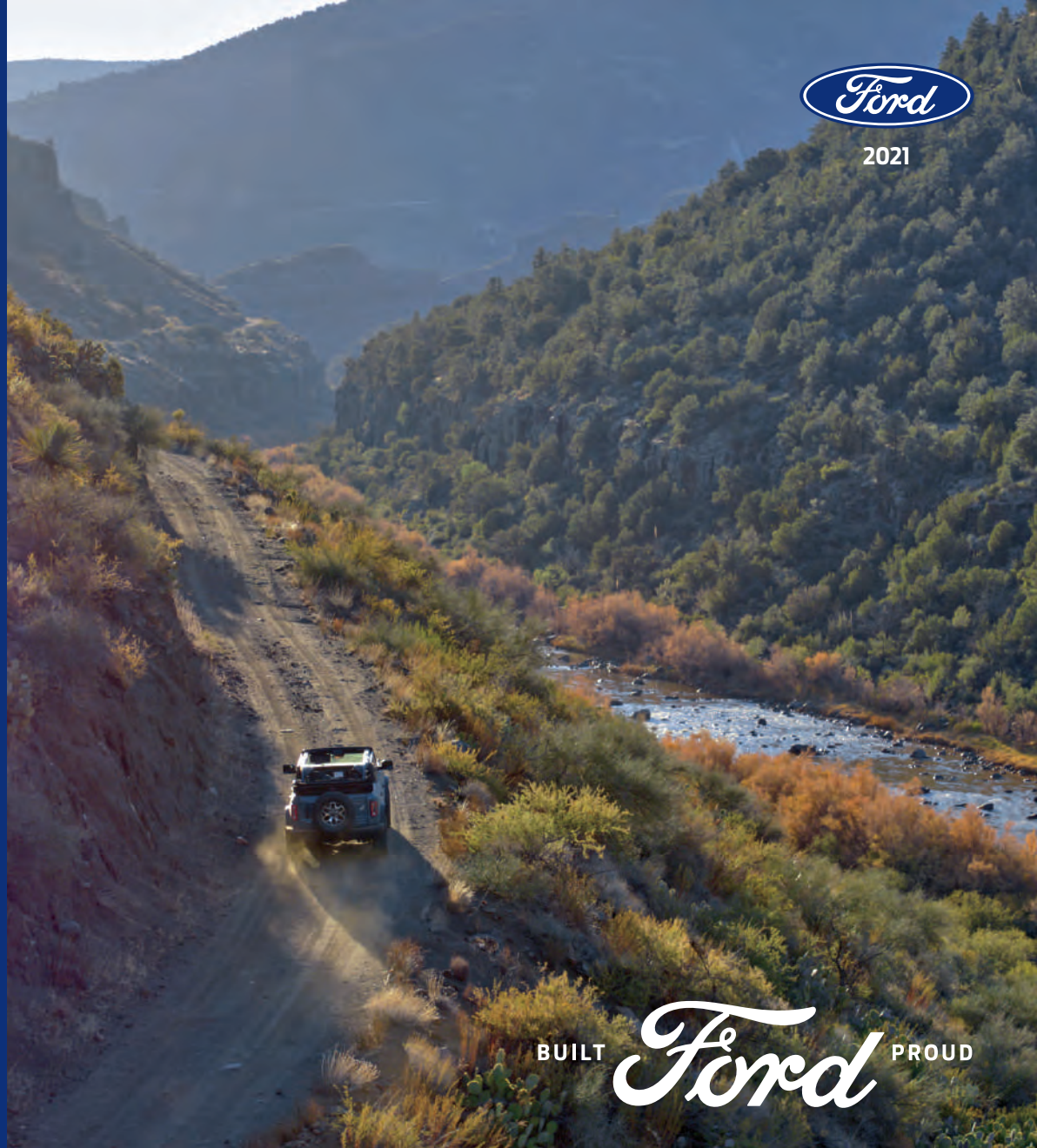
Meet FordPass.™ The app that lets you access complimentary remote features including start¹/stop¹ and lock/unlock, monitor your fuel level and oil life² and puts Rewards, Roadside Assistance³ and more in the palm of your hand.

Learn more at [FordPass.com](https://fordpass.com)

1. Automatic transmission only. 2. FordPass Connect, the FordPass App, and complimentary Connected Service are required for remote features (see FordPass Terms for details). Connected service and features depend on compatible AT&T network availability. Evolving technology/cellular networks/vehicle capability may limit functionality and prevent operation of connected features. Connected service excludes Wi-Fi hotspot. 3. Roadside Assistance is included for certain owners and available to everyone for a per-service fee. Ford reserves the right to change program details without obligations. Ford Roadside Assistance is a complimentary offering to all Ford owners for up to 5 years or 60,000 miles (from the date of sale), whichever comes first.



2021



BUILT *Ford* PROUD